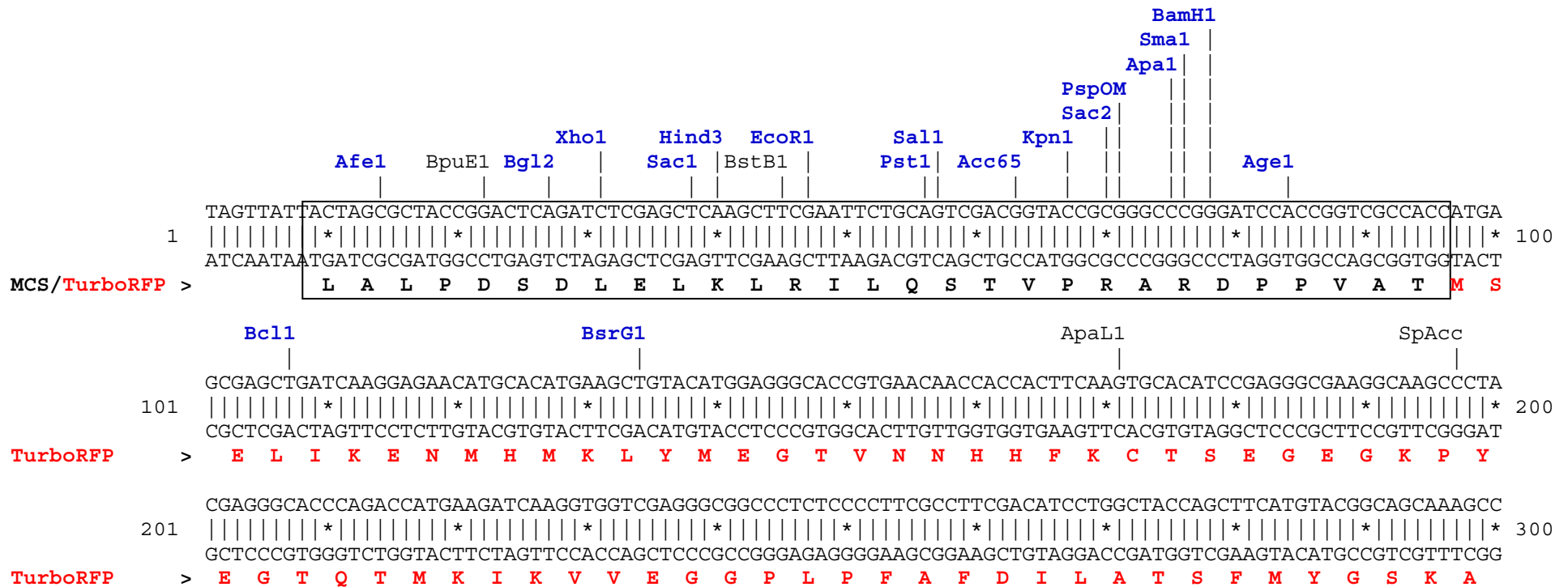


**pTurboRFP-PRL vector restriction map**

The data has not been verified by restriction digestion with each enzyme listed and does not take into account possible methylation sites. Enzymes that recognize unambiguous sequences less than 6 basepairs long are not included – for the more complete enzyme list please refer to the Table of restriction sites.

Unique sites are shown in bold blue. The location given specifies the 3' end of the cut DNA (the base to the left of the cut site).

MCS sequence is shown in frame, amino acids coded by MCS are shown in bold black.





Xba1 BsaB1 SpDon Dra1  
CGACTCTAGATCATAATCAGCCATACCACATTTGTAGAGGTTTTACTTGTCTTTAAAAAACCTCCCACACCTCCCCCTGAACCTGAAACATAAAATGAATG  
801 |||||\*|||||\*|||||\*|||||\*|||||\*|||||\*|||||\*|||||\*|||||\*|||||\*|||||\* 900  
GCTGAGATCTAGTATTAGTCGGTATGGTGTAAACATCTCCAAAATGAACGAAATTTTTTGGAGGGTGTGGAGGGGGACTTGGACTTTGTATTTTACTTAC

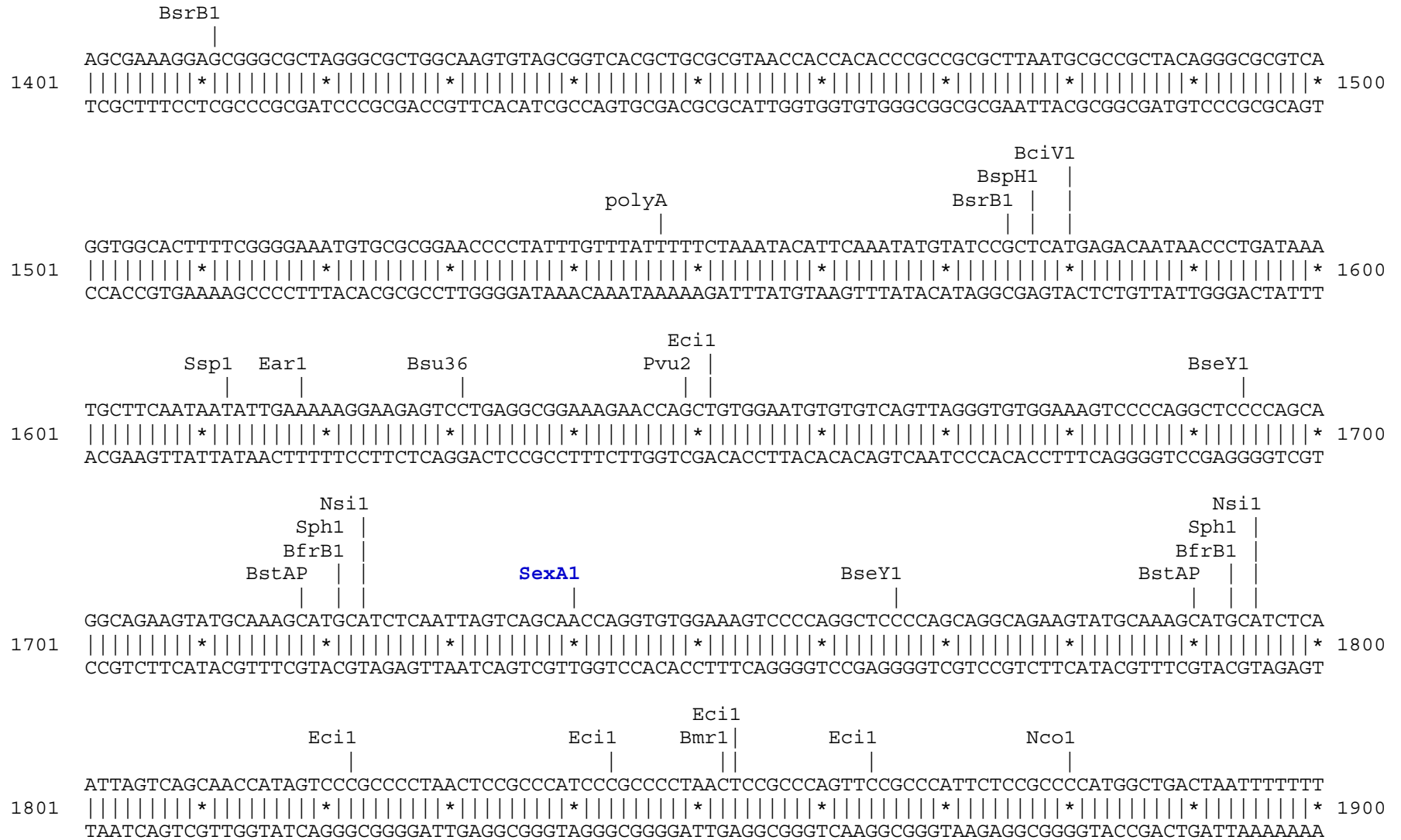
Bsm1 Mfe1 Hpa1 polyA Pst1 polyA polyA Bts1 Bsm1  
CAATTGTTGTTGTTAACTTGTATTATGTCAGCTTATAATGGTTACAAAATAAAGCAATAGCATCACAAATTTACAAAATAAAGCATTTTTTTCACTGCATTC  
901 |||||\*|||||\*|||||\*|||||\*|||||\*|||||\*|||||\*|||||\*|||||\*|||||\*|||||\* 1000  
GTTAAACAACAACAATTGAACAAAATAACGTCGAATATTACCAATGTTTATTTTCGTTATCGTAGTGTTTAAAGTGTTTATTTTCGTAAAAAAGTGACGTAAG

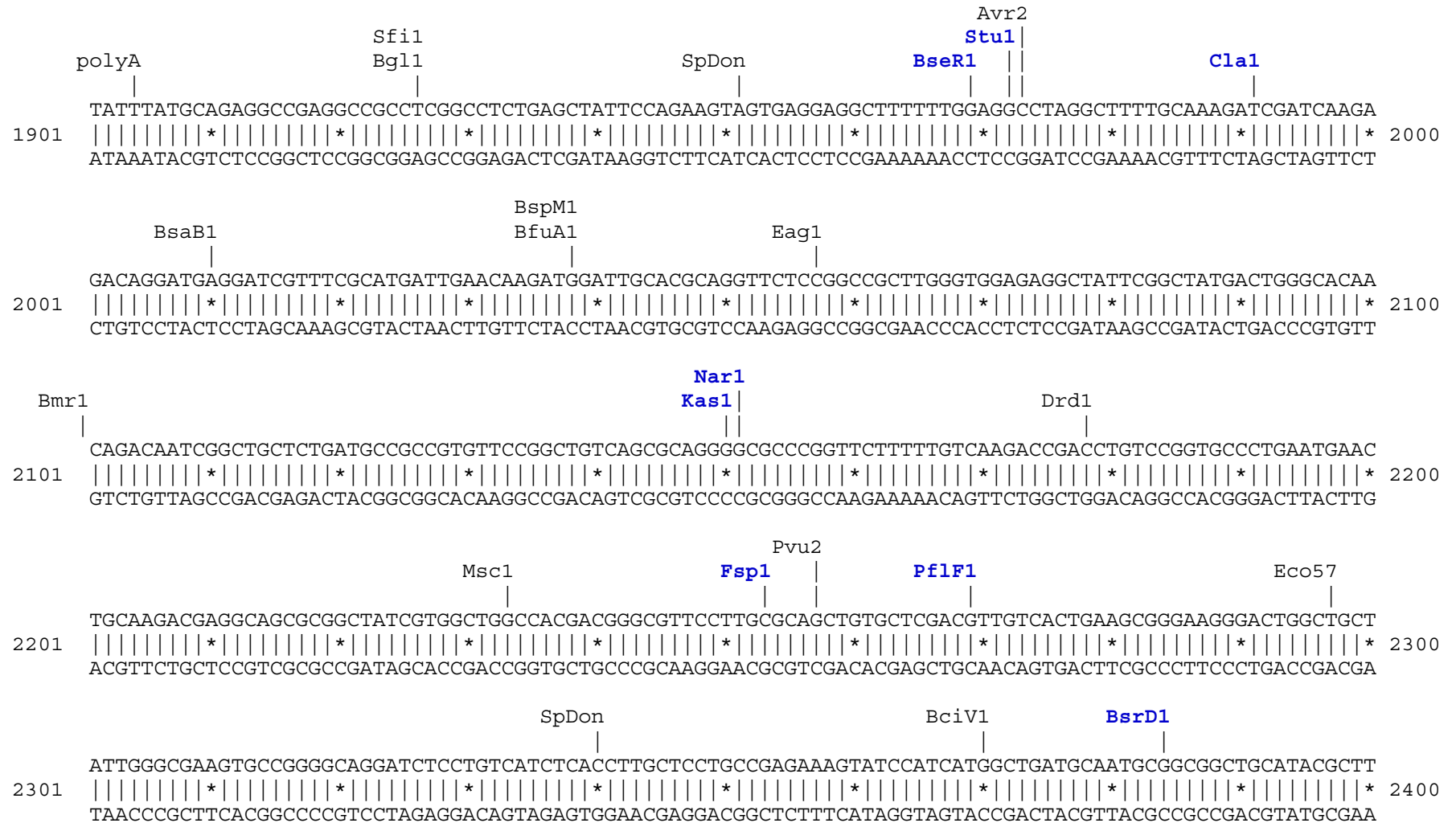
Afl12 SpDon Ssp1  
TAGTTGTGGTTTGTCCAAACTCATCAATGTATCTTAAGGCGTAAATTGTAAGCGTTAATATTTTGTAAAATTTCGCGTTAAATTTTTGTAAATCAGCTC  
1001 |||||\*|||||\*|||||\*|||||\*|||||\*|||||\*|||||\*|||||\*|||||\*|||||\*|||||\* 1100  
ATCAACACCAACAGGTTTGAGTAGTTACATAGAATTCCGCATTTAACATTCGCAATTATAAAACAATTTAAGCGCAATTTAAAAACAATTTAGTCGAG

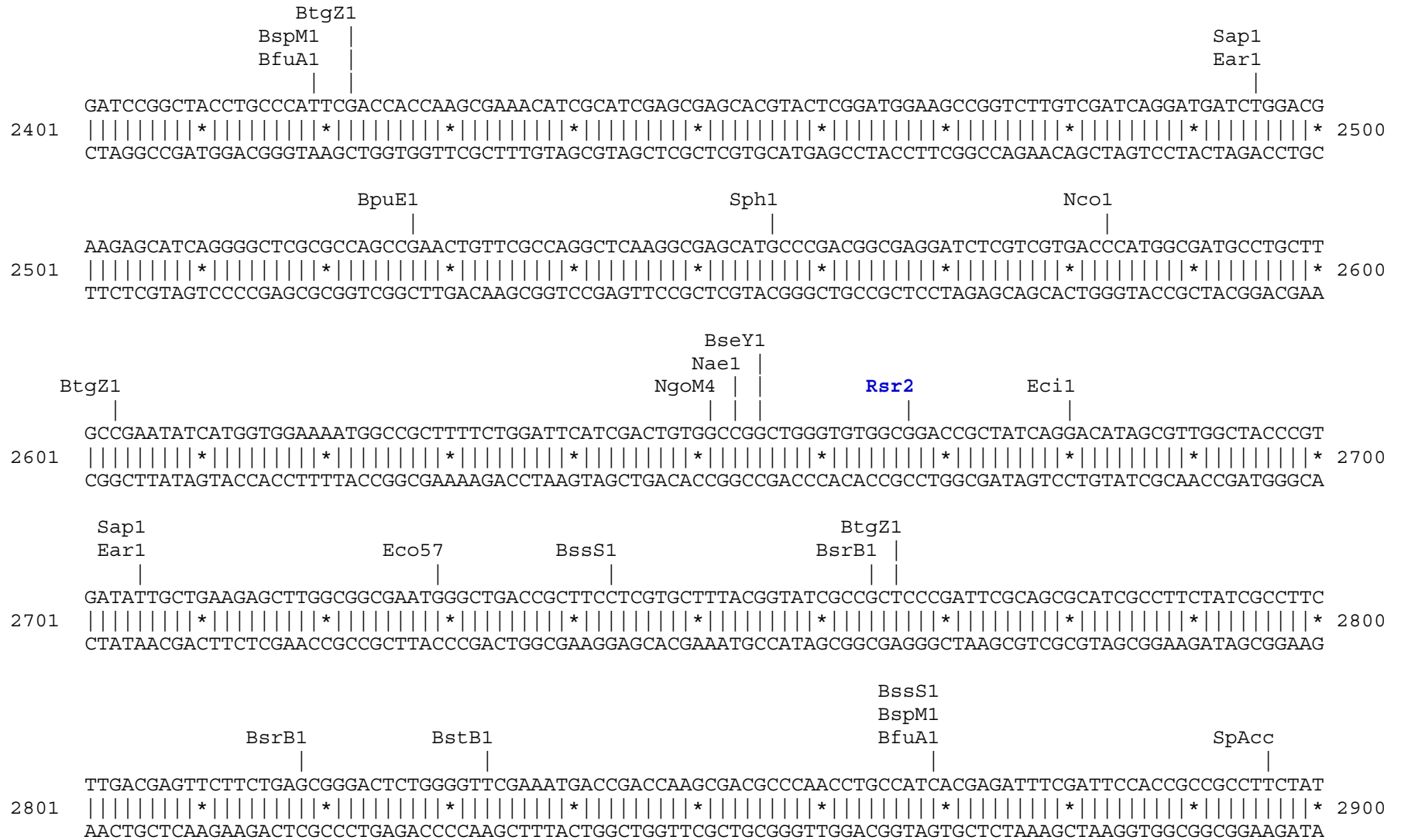
Pst1  
ATTTTTTAACCAATAGGCCGAAATCGGCAAAATCCCTTATAAATCAAAGAATAGACCGAGATAGGGTTGAGTGTGTTCCAGTTTGGAAACAAGAGTCCA  
1101 |||||\*|||||\*|||||\*|||||\*|||||\*|||||\*|||||\*|||||\*|||||\*|||||\*|||||\* 1200  
TAAAAAATTGGTTATCCGGCTTTAGCCGTTTTAGGGAATATTTAGTTTTCTTATCTGGCTCTATCCCAACTCACAACAAGGTCAAACCTTGTCTCAGGT

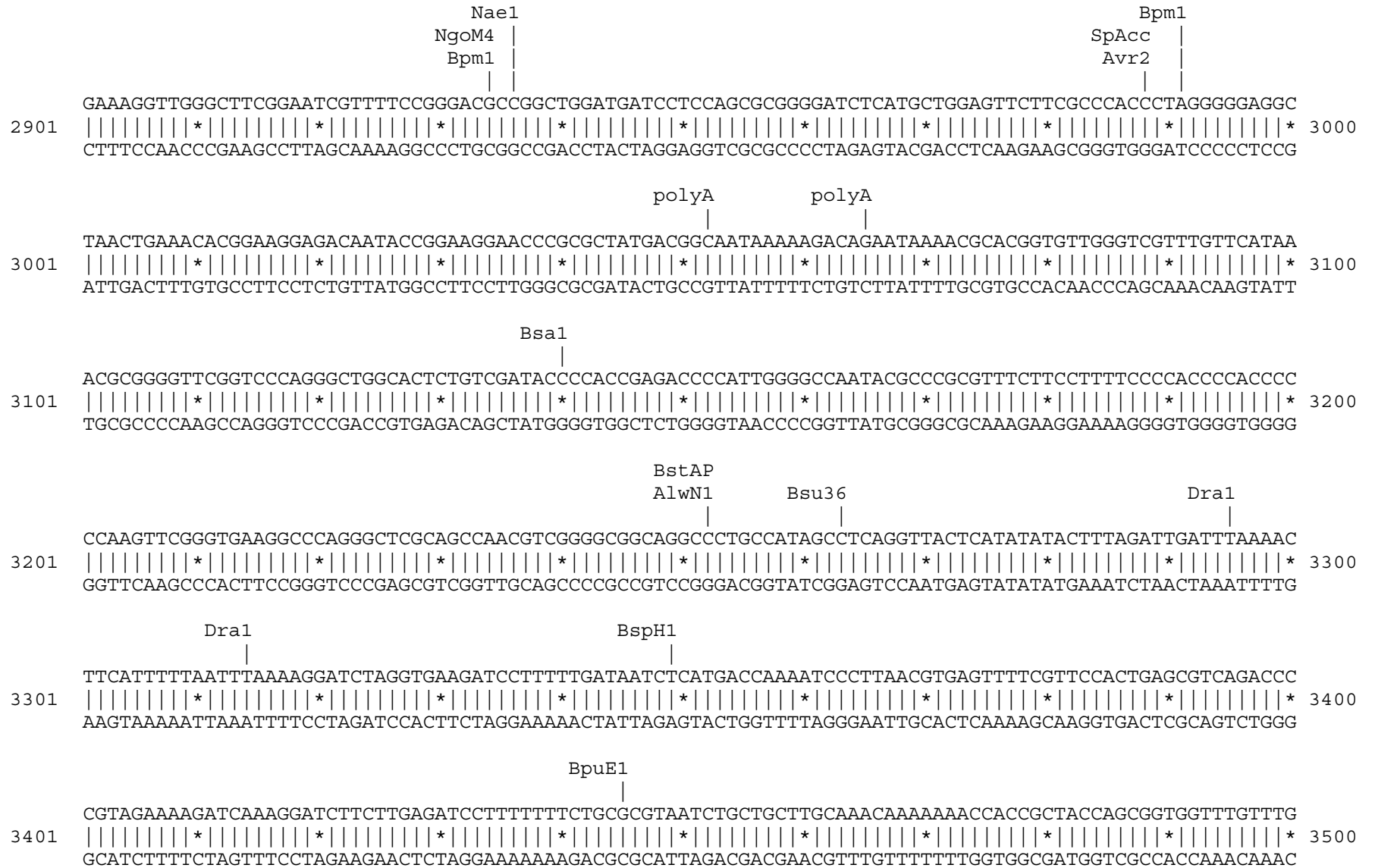
BsaXb Drd1 BsaXa BtgZ1 Dra3  
CTATTAAAGAACGTGGACTCCAACGTCAAAGGGCGAAAAACCGTCTATCAGGGCGATGGCCCACTACGTGAACCATCACCTAATCAAGTTTTTTGGGGT  
1201 |||||\*|||||\*|||||\*|||||\*|||||\*|||||\*|||||\*|||||\*|||||\*|||||\*|||||\* 1300  
GATAATTTCTTGCACCTGAGGTTGCAGTTTCCCGCTTTTTGGCAGATAGTCCCGCTACCGGGTGATGCACTTGGTAGTGGGATTAGTTCAAAAAACCCCA

SpAcc Nae1 NgoM4  
CGAGGTGCCGTAAAGCACTAAATCGGAACCTAAAGGGAGCCCCGATTTAGAGCTTGACGGGGAAAGCCGGCGAACGTGGCGAGAAAGGAAGGGGAAGAA  
1301 |||||\*|||||\*|||||\*|||||\*|||||\*|||||\*|||||\*|||||\*|||||\*|||||\*|||||\* 1400  
GCTCCACGGCATTTCGTGATTTAGCCTTGGGATTTCCCTCGGGGGCTAAATCTCGAACTGCCCTTTTCGGCCGCTTGCACCGCTCTTTCTTCCCTTCTT









```

                                Eco57                                SpAcc
                                |                                |
CCGGATCAAGAGCTACCAACTCTTTTTCCGAAGGTAAGTGGCTTCAGCAGAGCGCAGATACCAAATACTGTCCTTCTAGTGTAGCCGTAGTTAGGCCACC
3501 |||||*|||||*|||||*|||||*|||||*|||||*|||||*|||||*|||||*|||||*|||||*|||||*|||||*|||||*|||||* 3600
GGCCTAGTTCTCGATGGTTGAGAAAAAGGCTTCCATTGACCGAAGTCGTCTCGCGTCTATGGTTTATGACAGGAAGATCACATCGGCATCAATCCGGTGG

                                AlwN1                                BpuE1
                                |                                |
ACTTCAAGAACTCTGTAGCACCGCCTACATACCTCGCTCTGCTAATCCTGTTACCAGTGGCTGCTGCCAGTGGCGATAAGTCGTGTCTTACCGGGTTGGA
3601 |||||*|||||*|||||*|||||*|||||*|||||*|||||*|||||*|||||*|||||*|||||*|||||*|||||*|||||*|||||* 3700
TGAAGTTCTTGAGACATCGTGGCGGATGTATGGAGCGAGACGATTAGGACAATGGTCACCGACGACGGTCACCGCTATTGAGCAGAGAATGGCCCAACT

                                ApaL1                                BseY1
                                |                                |
CTCAAGACGATAGTTACCGGATAAGGCGCAGCGGTCTGGGCTGAACGGGGGGTTCGTGCACACAGCCCAGCTTGGAGCGAACGACCTACACCGAACTGAGA
3701 |||||*|||||*|||||*|||||*|||||*|||||*|||||*|||||*|||||*|||||*|||||*|||||*|||||*|||||*|||||* 3800
GAGTTCTGCTATCAATGGCCTATTCCGCGTCGCCAGCCCCGACTTGCCCCCAAGCACGTGTGTCGGGTGCAACCTCGCTTGCTGGATGTGGCTTGACTCT

                                BciV1                                Eci1                                BssS1
                                |                                |                                |
                                SpAcc
                                |
TACCTACAGCGTGAGCTATGAGAAAAGCGCCACGCTTCCCGAAGGGAGAAAAGGCGGACAGGTATCCGGTAAGCGGCAGGGTTCGGAACAGGAGAGCGCACGA
3801 |||||*|||||*|||||*|||||*|||||*|||||*|||||*|||||*|||||*|||||*|||||*|||||*|||||*|||||*|||||* 3900
ATGGATGTCGCACTCGATACTTTTCGCGGTGCGAAGGGCTTCCCTCTTTCCGCCTGTCCATAGGCCATTGCGCGTCCCAGCCTTGTCTCTCGCGTGCT

                                SpAcc                                Drd1                                BpuE1
                                |                                |                                |
GGGAGCTTCCAGGGGAAACGCCTGGTATCTTTATAGTCCTGTGCGGGTTTCGCCACCTCTGACTTGAGCGTCGATTTTTGTGATGCTCGTCAGGGGGGCG
3901 |||||*|||||*|||||*|||||*|||||*|||||*|||||*|||||*|||||*|||||*|||||*|||||*|||||*|||||*|||||* 4000
CCCTCGAAGGTCCCCCTTTGCGGACCATAGAAATATCAGGACAGCCCAAAGCGGTGGAGACTGAACTCGCAGCTAAAAAACAATACGAGCAGTCCCCCGC

                                SpAcc                                Eci1                                SpDon                                BspLU
                                |                                |                                |                                |
GAGCCTATGGAAAAACGCCAGCAACGCGGCTTTTTACGGTTCTTGGCCTTTTGGCTGGCCTTTTGGCTCACATGTTCTTTCTGCGTTATCCCCTGATTCT
4001 |||||*|||||*|||||*|||||*|||||*|||||*|||||*|||||*|||||*|||||*|||||*|||||*|||||*|||||*|||||* 4100
CTCGGATACCTTTTTCGCGTCTTTCGCCGGAATAAGGACCGGAAAACGACCGGAAAACGAGTGTACAAGAAAGGACGCAATAGGGGACTAAGA

```



```

                NsiI
                BfrB1 |
                |
                |
    4101  GTGGATAACCGTATTACCGCCATGCAT  4127
          |||||*|||||*|||||
          CACCTATTGGCATAATGGCGGTACGTA
  
```

**Found:**

**Acc65**   **Afe1**   **Afl2**   **Age1**   AlwN1   **Apa1**   ApaL1   Avr2   **BamH1**   **Bbs1**   BciV1   **Bcl1**   BfrB1   BfuA1  
 Bgl1   **Bgl2**   Bmr1   Bpm1   BpuE1   Bsa1   BsaB1   **BsaXa**   **BsaXb**   **BseR1**   BseY1   **Bsg1**   Bsm1   BspH1  
**BspLU**   BspM1   BsrB1   **BsrD1**   **BsrG1**   BssS1   BstAP   BstB1   Bsu36   BtgZ1   Bts1   **Cla1**   Dra1   Dra3  
 Drd1   Eag1   Ear1   Eci1   Eco57   **EcoR1**   **Fsp1**   **Hind3**   **Hpa1**   **Kas1**   **Kpn1**   **Mfe1**   Msc1   Nae1  
**Nar1**   Nco1   NgoM4   **Not1**   Nsi1   **PflF1**   PflM1   polyA   **PshA1**   Psi1   **PspOM**   **Pst1**   Pvu2   **Rsr2**  
**Sac1**   **Sac2**   **Sall**   Sap1   **Scal**   **SexA1**   Sfi1   **Sma1**   SpAcc   SpDon   Sph1   Ssp1   **Stu1**   **Xba1**  
**Xho1**

**Unique:**

**Acc65**   **Afe1**   **Afl2**   **Age1**   **Apa1**   **BamH1**   **Bbs1**   **Bcl1**   **Bgl2**   **BsaXa**   **BsaXb**   **BseR1**   **Bsg1**   **BspLU**  
**BsrD1**   **BsrG1**   **Cla1**   **EcoR1**   **Fsp1**   **Hind3**   **Hpa1**   **Kas1**   **Kpn1**   **Mfe1**   **Nar1**   **Not1**   **PflF1**   **PshA1**  
**PspOM**   **Pst1**   **Rsr2**   **Sac1**   **Sac2**   **Sall**   **Scal**   **SexA1**   **Sma1**   **Stu1**   **Xba1**   **Xho1**

**Not found:**

|       |       |       |       |       |       |       |       |       |       |       |       |       |       |
|-------|-------|-------|-------|-------|-------|-------|-------|-------|-------|-------|-------|-------|-------|
| Aar1  | Aat2  | Acl1  | Ahd1  | Ale1  | Asc1  | Ase1  | AsiS1 | Baela | Baelb | BbvC1 | Bcg1a | Bcg1b | Blp1  |
| BmgB1 | Bpu10 | BsiW1 | BsmB1 | BspE1 | BssH2 | BstE2 | BstX1 | BstZ1 | _Chi  | EcoK  | EcoN1 | EcoRV | ScFRT |
| Fse1  | FspA1 | I_Ceu | loxP  | Mlu1  | Nde1  | Nhe1  | Nru1  | Pac1  | Pme1  | Pml1  | Pvu1  | SanD1 | Sbf1  |
| Sgf1  | SgrA1 | SnaB1 | Spe1  | Srf1  | Swa1  | T3RNA | T7RNA | T7Ter | PISce | Xcm1  | Xmn1  |       |       |

**Excluded by site complexity:**

|       |       |       |       |       |       |       |       |       |       |       |       |       |       |
|-------|-------|-------|-------|-------|-------|-------|-------|-------|-------|-------|-------|-------|-------|
| Acc1  | Ac11  | Afl3  | Alu1  | Alw1  | Apo1  | Ava1  | Ava2  | Ban1  | Ban2  | Bbv1  | BceA1 | Bfa1  | Bme15 |
| BsaA1 | BsaH1 | BsaJ1 | BsaW1 | BseM2 | BsiE1 | BsiH1 | Bsl1  | BsmA1 | BsmF1 | Bsp12 | BspCa | BspCb | Bsr1  |
| BsrF1 | BssK1 | BstF5 | BstN1 | BstU1 | BstY1 | Btg1  | Cac8  | CviJ1 | Dde1  | Eae1  | EcoO1 | Fau1  | Fnu4H |
| Fok1  | Hae2  | Hae3  | Hga1  | Hha1  | Hinc2 | Hinf1 | HinP1 | Hpa2  | Hph1  | Hpy99 | Hpy1  | Hpy3  | HpyC3 |
| HpyC4 | HpyC5 | Mae3  | Mbo2  | Mnl1  | Mse1  | Msl1  | MspA1 | Mwo1  | Nci1  | Nla3  | Nla4  | Nsp1  | Ple1  |
| PpuM1 | Rsa1  | Sau3A | Sau96 | SfaN1 | Sfc1  | Sml1  | Sty1  | Taq1  | Tat1  | Tfi1  | Tse1  | Tsp45 | Tsp50 |
| TspR1 |       |       |       |       |       |       |       |       |       |       |       |       |       |