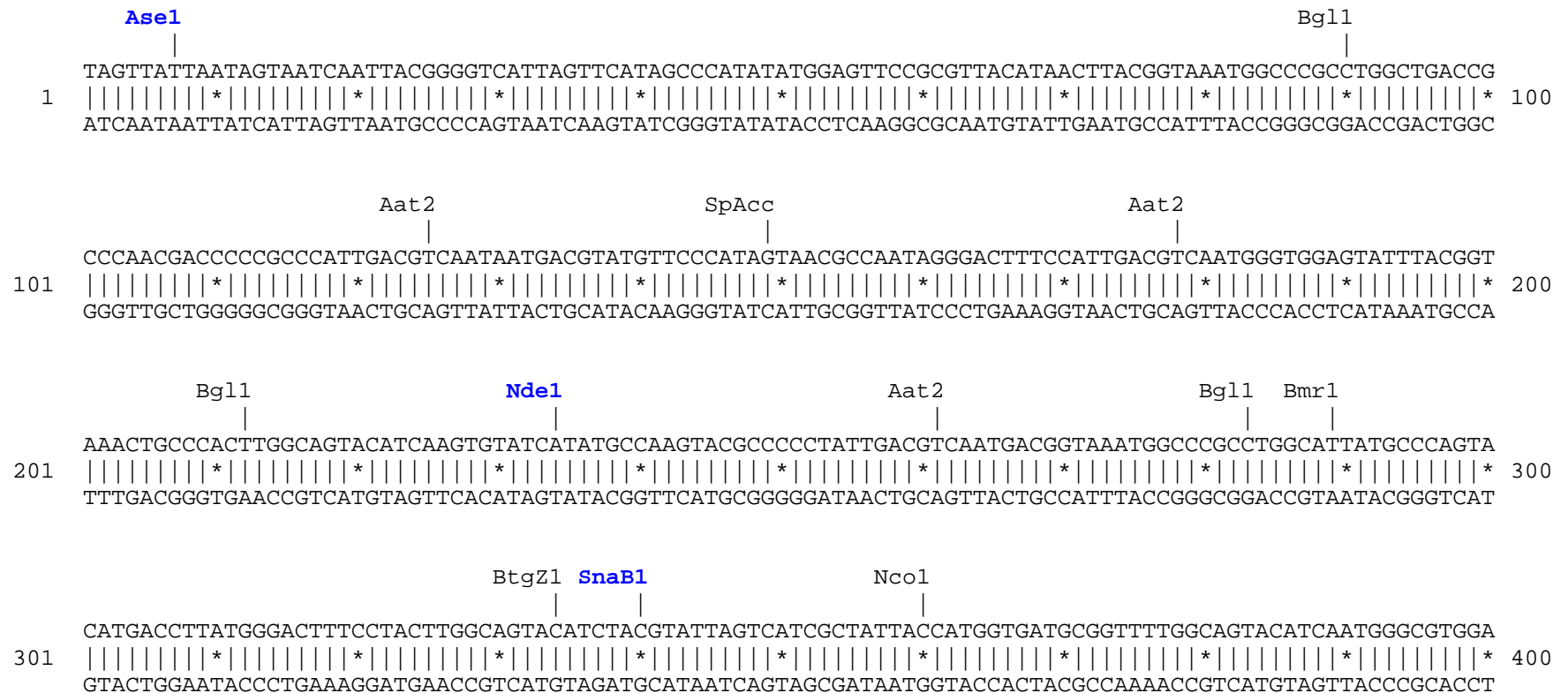


### pFusionRed-PDHA1 vector restriction map

The data has not been verified by restriction digestion with each enzyme listed and does not take into account possible methylation sites. Enzymes that recognize unambiguous sequences less than 6 base pairs long are not included – for the more complete enzyme list please refer to the Table of restriction sites.

Unique sites are shown in bold blue. The location given specifies the 3' end of the cut DNA (the base to the left of the cut site).

FusionRed amino acids are shown in red, human pyruvate dehydrogenase (lipoamide) alpha 1 (PDHA1) amino acids are shown in green, linker amino acids are shown in black.









```

      SpAcc
      |
1901  AGGCAAGCCCTACGAGGGCAGCCAGACCATGAGAATCAAGGTCGTCGAGGGCGGCCCTCTCCCCTTCGCCTTCGACATCCTGGCTACCAGCTTCATGTAC 2000
      |||||*|||||*|||||*|||||*|||||*|||||*|||||*|||||*|||||*|||||*|||||*|||||*|||||*|||||*|||||*
      TCCGTTTCGGGATGCTCCCGTGGGTCTGGTACTCTTAGTTCCAGCAGCTCCCGCCGGGAGAGGGGAAGCGGAAGCTGTAGGACCGATGGTTCGAAGTACATG
FusionRed > G K P Y E G T Q T M R I K V V E G G P L P F A F D I L A T S F M Y

      Bsu36      SpDon
      |          |
2001  GGCAGCAGAACCTTCATCAAGCACCCCTCCGGGCATCCCCGACTTCTTTAAGCAGTCCTTCCCTGAGGGCTTCACATGGGAGAGAGTCACCACATACGAAG 2100
      |||||*|||||*|||||*|||||*|||||*|||||*|||||*|||||*|||||*|||||*|||||*|||||*|||||*|||||*|||||*
      CCGTCGTCTTGAAGTAGTTTCGTGGGAGGCCCGTAGGGGCTGAAGAAATTCGTCAGGAAGGGACTCCCGAAGTGTACCCTCTCTCAGTGGTGTATGCTTC
FusionRed > G S R T F I K H P P G I P D F F K Q S F P E G F T W E R V T T Y E D

      Bbs1      Bpm1      BseY1
      |          |          |
2101  ACGGGGGCGTGCTGACCGCTACCCAGGACACCAGCCTCCAGGACGGCTGCCTCATCTACAACGTCAAGGTTAGAGGGGTGAACTTCCCAGCCAACGGCCC 2200
      |||||*|||||*|||||*|||||*|||||*|||||*|||||*|||||*|||||*|||||*|||||*|||||*|||||*|||||*|||||*
      TGCCCCCGCACGACTGGCGATGGGTCTGTGGTTCGGAGGTCTGCCGACGGAGTAGATGTTGCAGTTCCAATCTCCCCACTTGAAGGGTTCGGTTGCCGGG
FusionRed > G G V L T A T Q D T S L Q D G C L I Y N V K V R G V N F P A N G P

      BsmB1      BseY1      StuI      BglI      BssS1
      |          |          |          |          |
2201  TGTGATGCAGAAGAAAACACTCGGCTGGGAGGCCTCCACCGAGACGATGTACCCCGCTGACGGCGGCCTGGAAGGCGCATGTGACATGGCCCTGAAGCTC 2300
      |||||*|||||*|||||*|||||*|||||*|||||*|||||*|||||*|||||*|||||*|||||*|||||*|||||*|||||*|||||*
      AACTTACGTCTTCTTTTGTGAGCCGACCCTCCGGAGGTGGCTCTGCTACATGGGGCGACTGCCGCGGACCTTCCGCGTACACTGTACCGGGACTTCGAG
FusionRed > V M Q K K T L G W E A S T E T M Y P A D G G L E G A C D M A L K L

      Eco57      BsaI      BpuE1      BpuE1
      |          |          |          |
2301  GTGGGCGGGGGCCACCTGATCTGCAACCTTGAGACCACATACAGATCCAAGAAACCCGCTACGAACCTCAAGATGCCCGGGCGTCTACAACGTGGACCACA 2400
      |||||*|||||*|||||*|||||*|||||*|||||*|||||*|||||*|||||*|||||*|||||*|||||*|||||*|||||*|||||*
      CACCCGCCCCCGGTGGACTAGACGTTGGAACCTCTGGTGTATGTCTAGGTTCTTTGGGCGATGCTTGGAGTTCTACGGGCCGAGATGTTGCACCTGGTGT
FusionRed > V G G G H L I C N L E T T Y R S K K P A T N L K M P G V Y N V D H R

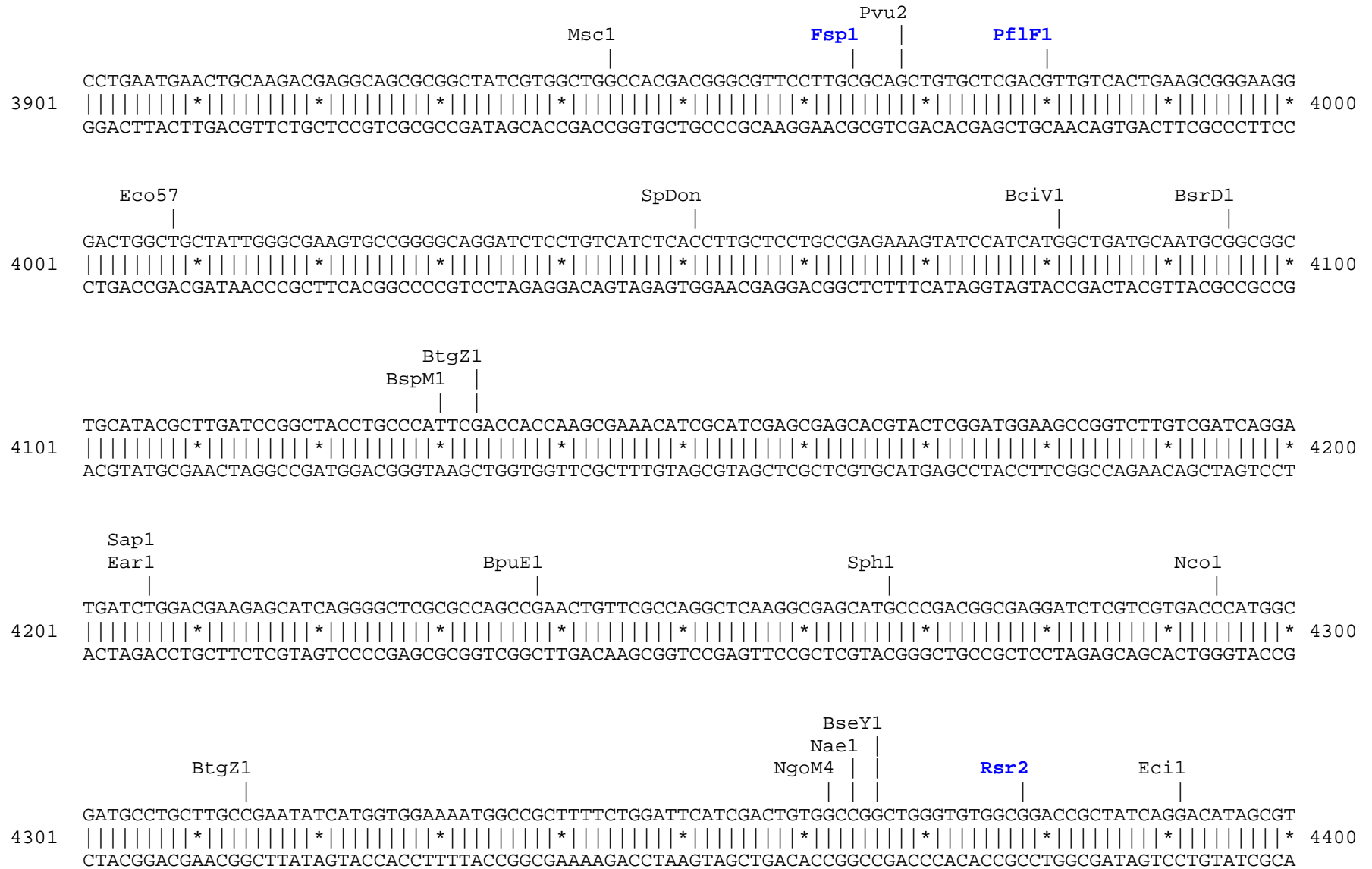
```













```

                                     BstAP
                                     AlwN1      Bsu36
                                     |             |
CACCCACCCCCAAGTTCGGGTGAAGGCCAGGGCTCGCAGCCAACGTCGGGGCGGCAGGCCCTGCCATAGCCTCAGGTTACTCATATATACTTTAGAT
4901 |||||*|||||*|||||*|||||*|||||*|||||*|||||*|||||*|||||*|||||*|||||*|||||*|||||* 5000
GTGGGGTGGGGGGTTCAAGCCCACCTTCCGGGTCCCAGCGTTCGGTTGCAGCCCCGCCGTCCGGGACGGTATCGGAGTCCAATGAGTATATATGAAATCTA

      DraI      DraI      BspH1
      |         |         |
TGATTTAAAACTTCATTTTTTAATTTAAAAGGATCTAGGTGAAGATCCTTTTTTGATAATCTCATGACCAAAATCCCTTAACGTGAGTTTTTCGTTCCACTGA
5001 |||||*|||||*|||||*|||||*|||||*|||||*|||||*|||||*|||||*|||||*|||||*|||||*|||||* 5100
ACTAAATTTTGAAGTAAAAATTAATTTTTCTAGATCCACTTCTAGGAAAACTATTAGAGTACTGGTTTTAGGGAATTGCACTCAAAGCAAGGTGACT

                                     BpuE1
                                     |
GCGTCAGACCCCGTAGAAAAGATCAAAGGATCTTCTTTGAGATCCTTTTTTTCTGCGGTAATCTGCTGCTTGCAAACAAAAAACACCGCTACCAGCGG
5101 |||||*|||||*|||||*|||||*|||||*|||||*|||||*|||||*|||||*|||||*|||||*|||||*|||||* 5200
CGCAGTCTGGGGCATCTTTTCTAGTTTCTTAGAAGAACTCTAGGAAAAAAGACGCGCATTAGACGACGAACGTTTGTTTTTTTGGTGGCGATGGTCGCC

                                     Eco57
                                     |
TGGTTTGTGGCCGATCAAGAGCTACCAACTCTTTTTCCGAAGGTAAGTGGCTTCAGCAGAGCGCAGATACCAAATACTGTCCTTCTAGTGTAGCCGTA
5201 |||||*|||||*|||||*|||||*|||||*|||||*|||||*|||||*|||||*|||||*|||||*|||||*|||||* 5300
ACCAAACAAACGGCCTAGTTCTCGATGGTTGAGAAAAAGGCTTCCATTGACCGAAGTCGTCTCGCTCTATGGTTTATGACAGGAAGATCACATCGGCAT

                                     AlwN1      BpuE1
                                     |             |
GTTAGGCCACCACTTCAAGAAGTCTGTAGCACCGCTACATACCTCGCTCTGCTAATCCTGTTACCAGTGGCTGCTGCCAGTGGCGATAAGTCGTGTCTT
5301 |||||*|||||*|||||*|||||*|||||*|||||*|||||*|||||*|||||*|||||*|||||*|||||*|||||* 5400
CAATCCGGTGGTGAAGTTCTTGAGACATCGTGGCGGATGTATGGAGCGAGACGATTAGACAATGGTCACCGACGACGGTCACCGCTATTGAGCACAGAA

                                     ApaI1      BseY1
                                     |             |
ACCGGGTTGGACTCAAGACGATAGTTACCGGATAAGGCGCAGCGGTCCGGCTGAACGGGGGGTTCGTGCACACAGCCCAGCTTGAGAGCAACGACCTACA
5401 |||||*|||||*|||||*|||||*|||||*|||||*|||||*|||||*|||||*|||||*|||||*|||||*|||||* 5500
TGGCCCAACCTGAGTTCTGCTATCAATGGCCTATTCCGCGTCGCCAGCCCAGCTTGCCCCCAAGCACGTGTGTCTGGGTTCGAACCTCGCTTGCTGGATGT

```

```

                                     SpAcc
                                     |
                                     BciV1
                                     Eci1
                                     |
5501 CCGAACTGAGATACCTACAGCGTGAGCTATGAGAAAAGCGCCACGCTTCCCAGGGGAGAAAAGGCGGACAGGTATCCGGTAAGCGGCAGGGTCGGAACAGG
    |||||*|||||*|||||*|||||*|||||*|||||*|||||*|||||*|||||*|||||*|||||*|||||*|||||*|||||*|||||* 5600
    GGCTTGACTCTATGGATGTCGCACTCGATACTCTTTTCGCGGTGCGAAGGGCTTCCCTCTTTCCGCTGTCCATAGGCCATTGCGCGTCCCAGCCTTGTCC

    BssS1
    |
    SpAcc
    |
    Drd1
    |
    BpuE1
    |
5601 AGAGCGCACGAGGGAGCTTCCAGGGGGAAACGCCTGGTATCTTTATAGTCCTGTGCGGGTTTCGCCACCTCTGACTTGAGCGTCGATTTTTGTGATGCTCG
    |||||*|||||*|||||*|||||*|||||*|||||*|||||*|||||*|||||*|||||*|||||*|||||*|||||*|||||*|||||* 5700
    TCTCGCGTGCTCCCTCGAAGGTCCCCCTTTGCGGACCATAGAAATATCAGGACAGCCCAAAGCGGTGGAGACTGAACTCGCAGCTAAAAACACTACGAGC

                                     SpDon
                                     BspLU
                                     ||
5701 TCAGGGGGGCGGAGCCTATGGAAAAACGCCAGCAACCGGCCTTTTTACGGTTTCTGGCCTTTTGTGCTGGCCTTTTGTGCTCACATGTTCTTTCTGCGTTAT
    |||||*|||||*|||||*|||||*|||||*|||||*|||||*|||||*|||||*|||||*|||||*|||||*|||||*|||||*|||||* 5800
    AGTCCCCCGCCTCGGATACCTTTTTGCGGTGCTTGCGCCGAAAAATGCCAAGGACCGGAAAAACGACCGGAAAAACGAGTGTACAAGAAAGGACGCAATA

                                     NsiI
                                     BfrB1
                                     |
5801 CCCCTGATTCTGTGGATAACCGTATTACCGCCATGCAT
    |||||*|||||*|||||*|||||*|||||*|||||*|||||*|||||*|||||*|||||*|||||*|||||*|||||*|||||*|||||* 5838
    GGGGACTAAGACACCTATTGGCATAATGGCGGTACGTA
```

Found:

|              |             |              |             |             |             |              |              |              |             |              |              |              |             |
|--------------|-------------|--------------|-------------|-------------|-------------|--------------|--------------|--------------|-------------|--------------|--------------|--------------|-------------|
| <b>Aar1</b>  | Aat2        | <b>Afl2</b>  | <b>Age1</b> | Ale1        | AlwN1       | <b>Apal</b>  | ApaL1        | <b>Ase1</b>  | Avr2        | <b>BamH1</b> | <b>Bbs1</b>  | Bcg1a        | Bcg1b       |
| BciV1        | BfrB1       | Bgl1         | <b>Bgl2</b> | Bmr1        | Bpm1        | <b>Bpu10</b> | BpuE1        | Bsa1         | BsaB1       | BsaXa        | BsaXb        | <b>BseR1</b> | BseY1       |
| Bsm1         | BsmB1       | <b>BspE1</b> | BspH1       | BspLU       | BspM1       | BsrB1        | BsrD1        | <b>BsrG1</b> | BssS1       | BstAP        | BstB1        | <b>BstX1</b> | Bsu36       |
| BtgZ1        | <b>Bts1</b> | Clal         | Dra1        | Dra3        | Drd1        | Eag1         | Ear1         | Eci1         | Eco57       | <b>EcoRV</b> | <b>Fsp1</b>  | Hind3        | <b>Hpa1</b> |
| <b>Kas1</b>  | <b>Mfe1</b> | Msc1         | Nae1        | <b>Nar1</b> | Nco1        | <b>Nde1</b>  | NgoM4        | <b>Nhe1</b>  | <b>Not1</b> | Nsi1         | <b>PflF1</b> | PflM1        | polyA       |
| <b>PshA1</b> | Psil        | <b>PspOM</b> | <b>Pst1</b> | Pvu2        | <b>Rsr2</b> | Sap1         | <b>SexA1</b> | <b>Sfi1</b>  | <b>Sma1</b> | <b>SnaB1</b> | SpAcc        | SpDon        | Sph1        |
| Ssp1         | Stul        | <b>Xba1</b>  | <b>Xmn1</b> |             |             |              |              |              |             |              |              |              |             |

Unique:

|              |             |             |              |             |              |             |             |              |              |              |              |              |             |
|--------------|-------------|-------------|--------------|-------------|--------------|-------------|-------------|--------------|--------------|--------------|--------------|--------------|-------------|
| <b>Aar1</b>  | <b>Afl2</b> | <b>Age1</b> | <b>Apal</b>  | <b>Ase1</b> | <b>BamH1</b> | <b>Bbs1</b> | <b>Bgl2</b> | <b>Bpu10</b> | <b>BseR1</b> | <b>BspE1</b> | <b>BsrG1</b> | <b>BstX1</b> | <b>Bts1</b> |
| <b>EcoRV</b> | <b>Fsp1</b> | <b>Hpa1</b> | <b>Kas1</b>  | <b>Mfe1</b> | <b>Nar1</b>  | <b>Nde1</b> | <b>Nhe1</b> | <b>Not1</b>  | <b>PflF1</b> | <b>PshA1</b> | <b>PspOM</b> | <b>Pst1</b>  | <b>Rsr2</b> |
| <b>SexA1</b> | <b>Sfi1</b> | <b>Sma1</b> | <b>SnaB1</b> | <b>Xba1</b> | <b>Xmn1</b>  |             |             |              |              |              |              |              |             |

Not found:

|       |       |       |       |       |       |       |       |       |      |       |       |       |       |
|-------|-------|-------|-------|-------|-------|-------|-------|-------|------|-------|-------|-------|-------|
| Acc65 | Acl1  | Afe1  | Ahd1  | Asc1  | AsiS1 | Baela | Baelb | BbvC1 | Bcl1 | Blp1  | BmgB1 | Bsg1  | BsiW1 |
| BssH2 | BstE2 | BstZ1 | BxatB | BxatL | BxatR | BxatP | _Chi  | Ecl2  | EcoK | EcoN1 | EcoR1 | FCatB | FCatL |
| FCatR | FCatP | ScFRT | Fse1  | FspA1 | I_Ceu | Kpn1  | loxP  | Mlu1  | Nru1 | Pac1  | Pme1  | Pml1  | Pvu1  |
| R4atB | R4atL | R4atP | R4atR | Sac1  | Sac2  | Sall  | SanD1 | Sbf1  | Sca1 | Sgf1  | SgrA1 | Spe1  | Srf1  |
| Swal  | T3RNA | T7RNA | T7Ter | PISce | Xcm1  | Xho1  |       |       |      |       |       |       |       |

Excluded by site complexity:

|       |       |       |       |       |       |       |       |       |       |       |       |       |       |
|-------|-------|-------|-------|-------|-------|-------|-------|-------|-------|-------|-------|-------|-------|
| Acc1  | Acil  | Afl3  | Alu1  | Alw1  | Apo1  | Ava1  | Ava2  | Ban1  | Ban2  | Bbv1  | BceA1 | Bfa1  | Bme15 |
| BsaA1 | BsaH1 | BsaJ1 | BsaW1 | BseM2 | BsiE1 | BsiH1 | Bsl1  | BsmA1 | BsmF1 | Bsp12 | BspCa | BspCb | Bsr1  |
| BsrF1 | BssK1 | BstF5 | BstN1 | BstU1 | BstY1 | Btg1  | Cac8  | CviJ1 | Dde1  | Eae1  | EcoO1 | Faul  | Fnu4H |
| Fok1  | Hae2  | Hae3  | Hga1  | Hha1  | Hinc2 | Hinf1 | HinP1 | Hpa2  | Hph1  | Hpy99 | Hpy1  | Hpy3  | HpyC3 |
| HpyC4 | HpyC5 | Mae3  | Mbo2  | Mnl1  | Mse1  | Msl1  | MspA1 | Mwo1  | Nci1  | Nla3  | Nla4  | Nsp1  | Ple1  |
| PpuM1 | Rsa1  | Sau3A | Sau96 | SfaN1 | Sfc1  | Sml1  | Sty1  | Taq1  | Tat1  | Tfi1  | Tse1  | Tsp45 | Tsp50 |
| TspR1 |       |       |       |       |       |       |       |       |       |       |       |       |       |