

SpDon | Eco57 | MluI | BclI | BpmI |

1401 | GGTGAACCGCATCGAGCTGAAGGGCATCGGCTTCAAGGAGGACGGCAACATCCTGGGGCACAAGCTGGAGTACAACACGCGTGATCAGCTGACCGAAGAA | 1500

Case12 > V N R I E L K G I G F K E D G N I L G H K L E Y N T R D Q L T E E

EcoRI | T7Ter | BtgZI | BspHI |

1501 | CAGATTGCTGAATTCAAGGAAGCCTTCTCCCTATTTGATAAAGATGGCGATGGCACCATCACAAAGGAACTTGGAACTGTCATGAGGTCAGTGGGTC | 1600

Case12 > Q I A E F K E A F S L F D K D G D G T I T T K E L G T V M R S L G Q

BmrI | AlwNI | BclI | SpAcc |

1601 | AGAACCCAACAGAAGCTGAATTGCAGGATATGATCAATGAAGTGGATGCTGATGGTAATGGCACCATTGACTTCCCCGAATTTTTGACTATGATGGCTAG | 1700

Case12 > N P T E A E L Q D M I N E V D A D G N G T I D F P E F L T M M A R

T7Ter | SpDon | BsmI | BsrDI |

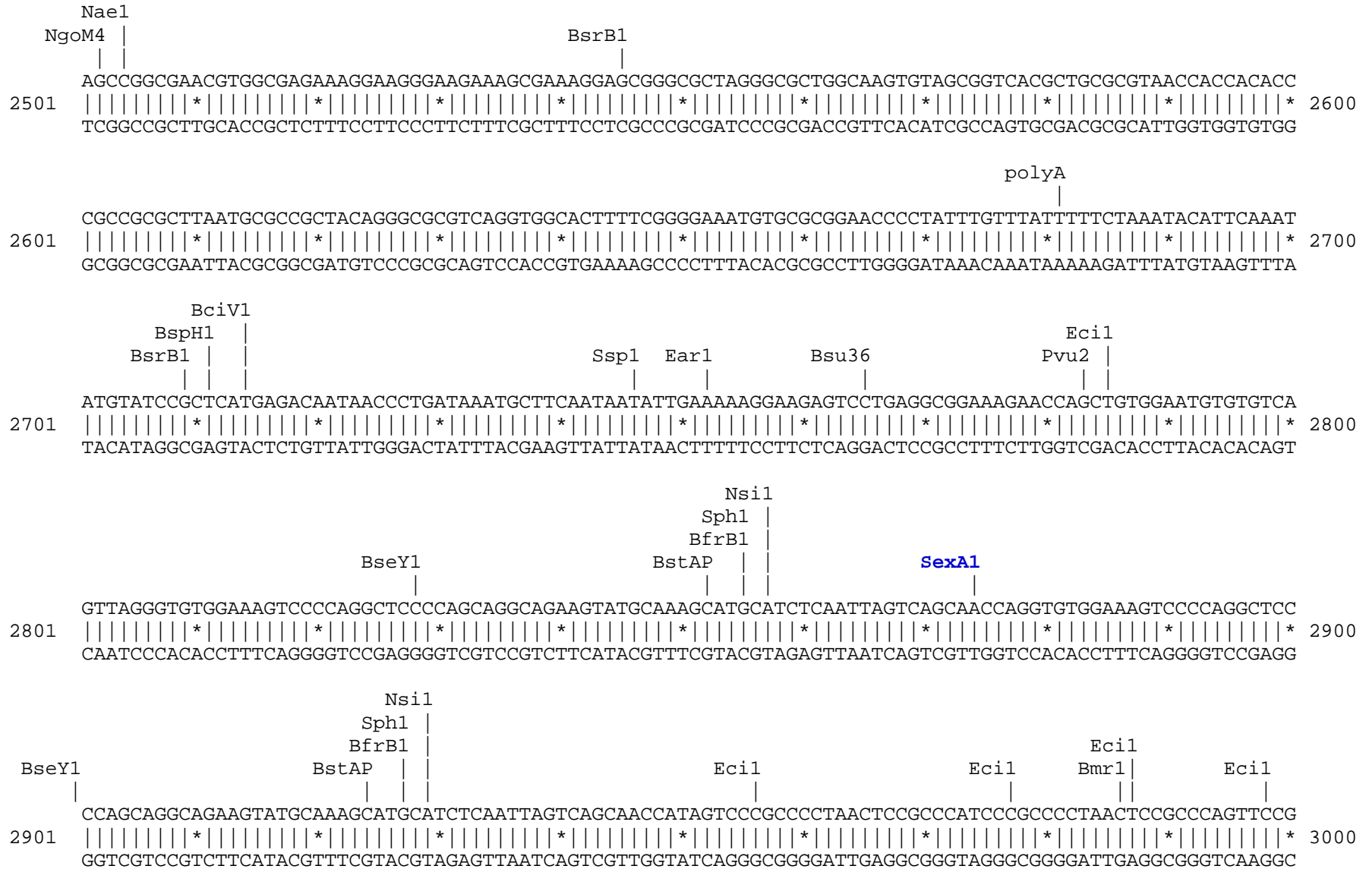
1701 | AAAAATGAAAGATACAGATAGTGAAGAAGAAATCCGTGAGGCATTCCGAGTCTTTGACAAGGATGGCAATGGTTATATCAGTGCAGCAGAACTACGTCAC | 1800

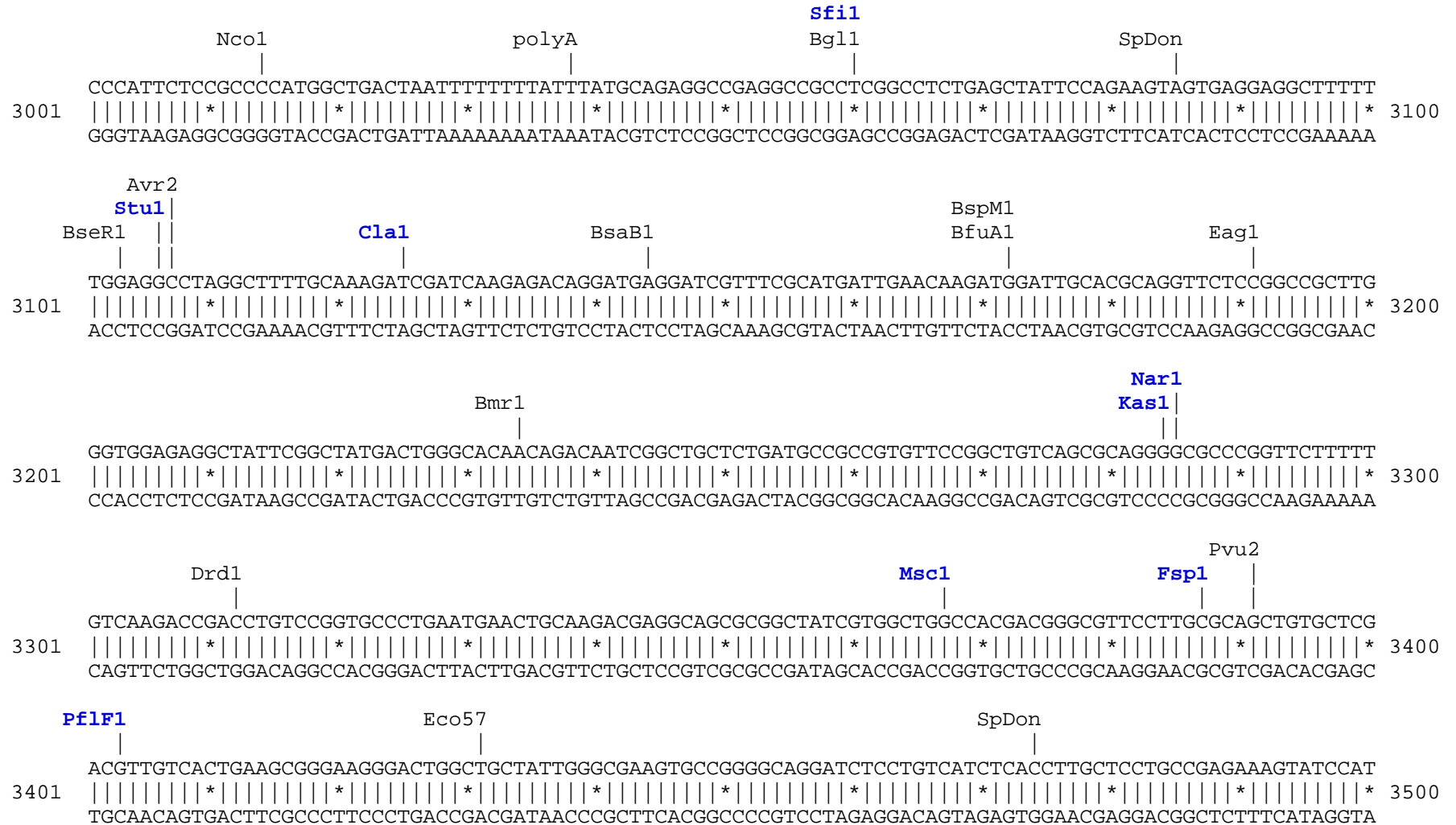
Case12 > K M K D T D S E E E I R E A F R V F D K D G N G Y I S A A E L R H

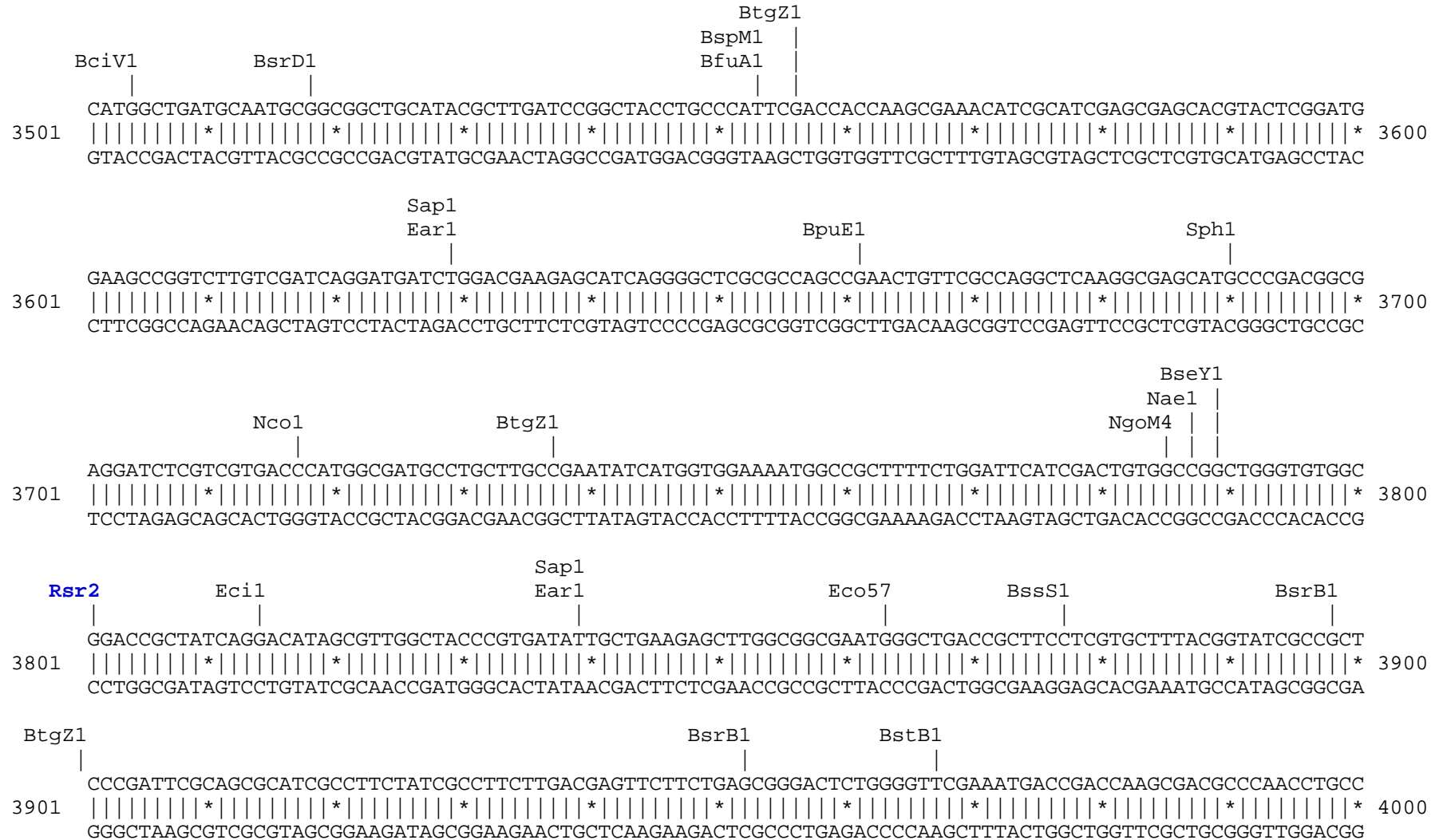
BspHI | BsgI | BmgBI | T7Ter | BclI | BsmBI | DrdI | SpAcc | EcoRI |

1801 | GTCATGACAAACTTAGGAGAAAACTAACAGATGAAGAAGTAGATGAAATGATCAGAGAAGCAGATATTGATGGAGACGGACAAGTCAACTATGAAGAAT | 1900

Case12 > V M T N L G E K L T D E E V D E M I R E A D I D G D G Q V N Y E E F









Found:

Aat2	Acc65	Afe1	Afl2	Age1	Ale1	AlwN1	Apa1	Apal1	Ase1	Avr2	BamH1	Bcg1a	Bcg1b
BciV1	Bcl1	BfrB1	BfuA1	Bgl1	Bgl2	Blp1	BmgB1	Bmr1	Bpm1	Bpu10	BpuE1	Bsa1	BsaB1
BsaXa	BsaXb	BseR1	BseY1	Bsg1	Bsm1	BsmB1	BspH1	BspLU	BspM1	BsrB1	BsrD1	BsrG1	BssS1
BstAP	BstB1	Bsu36	BtgZ1	Bts1	Clal	Dra1	Dra3	Drd1	Eag1	Ear1	Eci1	Eco57	EcoR1
Fsp1	Hind3	Hpa1	Kas1	Kpn1	Mfe1	Mlu1	Msc1	Nae1	Nar1	Nco1	Nde1	NgoM4	Nhe1
Not1	Nsi1	PflF1	polyA	Psil	PspOM	Pst1	Pvu2	Rsr2	Sac1	Sac2	Sall	Sap1	SexA1
Sfi1	Sma1	SnaB1	SpAcc	SpDon	Sph1	Ssp1	Stu1	T7Ter	Xba1	Xho1	Xmn1		

Unique:

Acc65	Afe1	Afl2	Age1	Apa1	Apal1	Ase1	BamH1	Bcg1a	Bcg1b	Bgl2	Blp1	Bsa1	BsaXa
BsaXb	BsmB1	BspLU	BsrG1	Bts1	Clal	Dra3	Fsp1	Hind3	Hpa1	Kas1	Kpn1	Mfe1	Mlu1
Msc1	Nar1	Nde1	Nhe1	Not1	PflF1	PspOM	Pst1	Rsr2	Sac2	Sall	SexA1	Sfi1	Sma1
SnaB1	Stu1	Xba1	Xmn1										

Not found:

Aar1	Ac11	Ahd1	Asc1	AsiS1	Baela	Baelb	Bbs1	BbvC1	BsiW1	BspE1	BssH2	BstE2	BstX1
BstZ1	_Chi	EcoK	EcoN1	EcoRV	ScFRT	Fse1	FspA1	I_Ceu	loxP	Nru1	Pac1	PflM1	Pme1
Pml1	PshA1	Pvu1	SanD1	Sbf1	Sca1	Sgf1	SgrA1	Spe1	Srf1	Swal	T3RNA	T7RNA	PISce
Xcm1													

Excluded by site complexity:

Acc1	Acil	Afl3	Alu1	Alw1	Apo1	Ava1	Ava2	Ban1	Ban2	Bbv1	BceA1	Bfa1	Bme15
BsaA1	BsaH1	BsaJ1	BsaW1	BseM2	BsiE1	BsiH1	Bsl1	BsmA1	BsmF1	Bsp12	BspCa	BspCb	Bsr1
BsrF1	BssK1	BstF5	BstN1	BstU1	BstY1	Btg1	Cac8	CviJ1	Dde1	Eae1	EcoO1	Faul	Fnu4H
Fok1	Hae2	Hae3	Hga1	Hha1	Hinc2	Hinf1	HinP1	Hpa2	Hph1	Hpy99	Hpy1	Hpy3	HpyC3
HpyC4	HpyC5	Mae3	Mbo2	Mnl1	Mse1	Msl1	MspA1	Mwo1	Nci1	Nla3	Nla4	Nsp1	Ple1
PpuM1	Rsa1	Sau3A	Sau96	SfaN1	Sfc1	Sml1	Sty1	Taq1	Tat1	Tfi1	Tse1	Tsp45	Tsp50
TspR1													