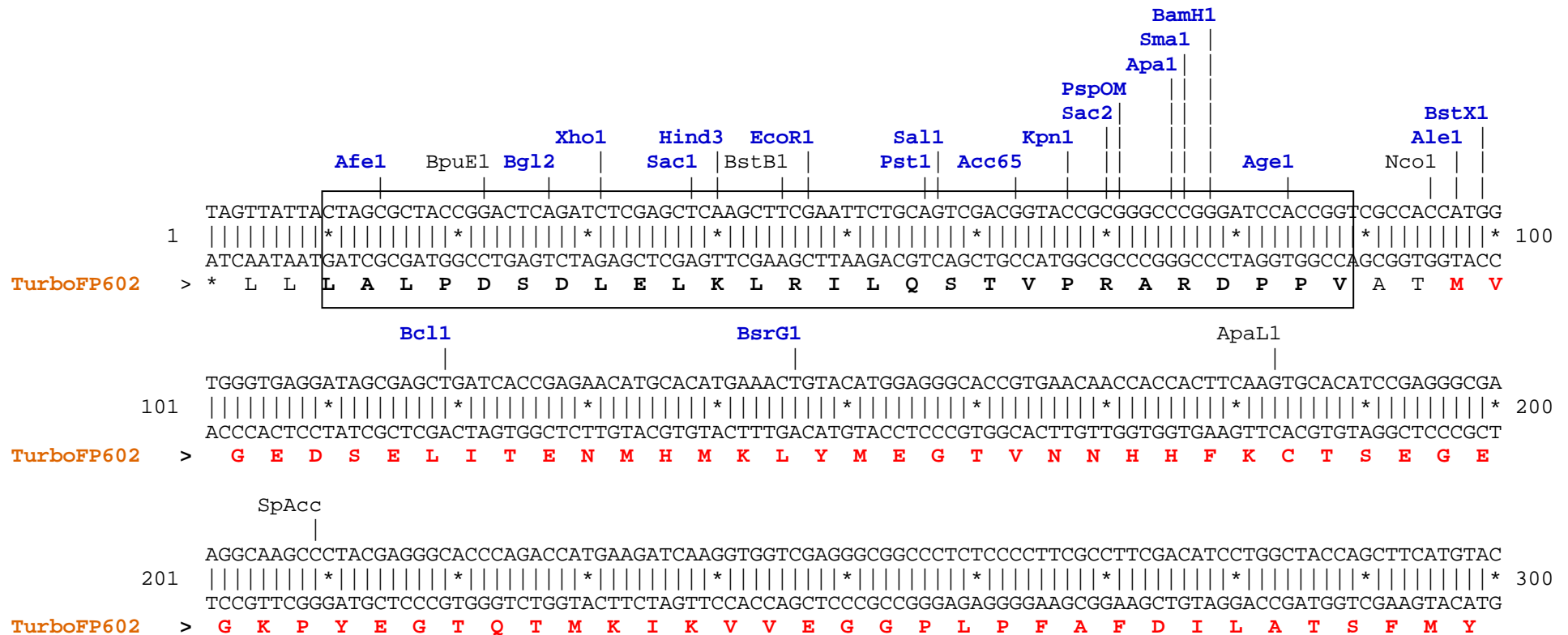


pTurboFP602-PRL vector restriction map

The data has not been verified by restriction digestion with each enzyme listed and does not take into account possible methylation sites. Enzymes that recognize unambiguous sequences less than 6 basepairs long are not included – for the more complete enzyme list please refer to the Table of restriction sites.

Unique sites are shown in bold blue. The location given specifies the 3' end of the cut DNA (the base to the left of the cut site).

MCS sequence shown in frame, amino acids coded by MCS shown in bold black.




```

                                NsiI
                                BfrB1 |
                                | |
TCCCCTGATTCTGTGGATAACCGTATTACCGCCATGCAT
4101 |||||*|||||*|||||*||||| 4139
      AGGGGACTAAGACACCTATTGGCATAATGGCGGTACGTA
  
```

Found:

Acc65	Afe1	Afl2	Age1	Ale1	AlwN1	Apa1	ApaL1	Avr2	BamH1	Bbs1	BciV1	Bcl1	BfrB1
BfuA1	Bgl1	Bgl2	Bmr1	Bpm1	BpuE1	Bsa1	BsaB1	BsaXa	BsaXb	BseR1	BseY1	Bsg1	Bsm1
BspH1	BspLU	BspM1	BsrB1	BsrD1	BsrG1	BssS1	BstAP	BstB1	BstX1	Bsu36	BtgZ1	Bts1	Cla1
Dra1	Dra3	Drd1	Eag1	Ear1	Eci1	Eco57	EcoR1	Fsp1	Hind3	Hpa1	Kas1	Kpn1	Mfe1
Msc1	Nae1	Nar1	Nco1	NgoM4	Not1	Nsi1	PflF1	PflM1	polyA	PshA1	Psi1	PspOM	Pst1
Pvu2	Rsr2	Sac1	Sac2	Sall	Sap1	Scal	SexA1	Sfi1	Sma1	SpAcc	SpDon	Sph1	Ssp1
Stu1	Xba1	Xho1											

Unique:

Acc65	Afe1	Afl2	Age1	Ale1	Apa1	BamH1	Bbs1	Bcl1	Bgl2	BsaXa	BsaXb	BseR1	Bsg1
BspLU	BsrD1	BsrG1	BstX1	Cla1	EcoR1	Fsp1	Hind3	Hpa1	Kas1	Kpn1	Mfe1	Nar1	Not1
PflF1	PshA1	PspOM	Pst1	Rsr2	Sac1	Sac2	Sall	Scal	SexA1	Sma1	Stu1	Xba1	Xho1

Not found:

Aar1	Aat2	Acl1	Ahd1	Asc1	Ase1	AsiS1	Baela	Baelb	BbvC1	Bcgl1a	Bcgl1b	Blp1	BmgB1
Bpu10	BsiW1	BsmB1	BspE1	BssH2	BstE2	BstZ1	_Chi	EcoK	EcoN1	EcoRV	ScFRT	Fse1	FspA1
I_Ceu	loxP	Mlu1	Nde1	Nhe1	Nru1	Pac1	Pme1	Pml1	Pvu1	SanD1	Sbf1	Sgf1	SgrA1
SnaB1	Spe1	Srf1	Swa1	T3RNA	T7RNA	T7Ter	PISce	Xcm1	Xmn1				

Excluded by site complexity:

Acc1	Acil	Afl3	Alu1	Alw1	Apo1	Ava1	Ava2	Ban1	Ban2	Bbv1	BceA1	Bfa1	Bme15
BsaA1	BsaH1	BsaJ1	BsaW1	BseM2	BsiE1	BsiH1	Bsl1	BsmA1	BsmF1	Bsp12	BspCa	BspCb	Bsr1
BsrF1	BssK1	BstF5	BstN1	BstU1	BstY1	Btg1	Cac8	CviJ1	Dde1	Eae1	EcoO1	Fau1	Fnu4H
Fok1	Hae2	Hae3	Hga1	Hha1	Hinc2	Hinf1	HinP1	Hpa2	Hph1	Hpy99	Hpy1	Hpy3	HpyC3
HpyC4	HpyC5	Mae3	Mbo2	Mnl1	Mse1	Msl1	MspA1	Mwo1	Nci1	Nla3	Nla4	Nsp1	Ple1
PpuM1	Rsa1	Sau3A	Sau96	SfaN1	Sfc1	Sml1	Sty1	Taq1	Tat1	Tfil	Tse1	Tsp45	Tsp50
TspR1													