

```

PflM1
|
ATGAGCTGGAAGCCCATCTGCCACCTGATCCAGTACGGCGAGCCCTTCTTCGCCCCTACCCCGACGGCATCAGCCATTTTCGCCCAGGAGTGCTTCCCCG
901 |||||*|||||*|||||*|||||*|||||*|||||*|||||*|||||*|||||*|||||*|||||*|||||*|||||* 1000
TACTCGACCTTCGGGTAGACGGTGGACTAGGTTCATGCCGCTCGGGAAGAAGCGGGCGATGGGGCTGCCGTAGTCGGTAAAGCGGGTCTCACGAAGGGGC
KillerRed > M S W K P I C H L I Q Y G E P F F A R Y P D G I S H F A Q E C F P E

BspM1
BfuA1
Aar1
Bpu10
Ale1SpDon
|
AGGGCCTGAGCATCGACCGCACCGTGCCTTCGAGAACGACGGCACCATGACCAGCCACCACACCTACGAGCTGGACGACACCTGCGTGGTGAGCCGCAT
1001 |||||*|||||*|||||*|||||*|||||*|||||*|||||*|||||*|||||*|||||*|||||*|||||*|||||* 1100
TCCCGACTCGTAGCTGGCGTGGCACGCGAAGCTTTGCTGCCGTGGTACTGGTTCGGTGGTGTGGATGCTCGACCTGCTGTGGACGCACCACTCGGCGTA
KillerRed > G L S I D R T V R F E N D G T M T S H H T Y E L D D T C V V S R I

PflM1
Chi
Pvu2
|
Bsa1
|
BspLU
|
CACCGTGAAGTGCAGCGGCTTCCAGCCCAGCGCCCATCATGCGCGACCAGCTGGTGGACATCCTGCCAACGAGACCCACATGTTCCCCCACGGCCCC
1101 |||||*|||||*|||||*|||||*|||||*|||||*|||||*|||||*|||||*|||||*|||||*|||||*|||||* 1200
GTGGCACTTGACGCTGCCGAAGGTTCGGGCTGCCGGGTAGTACGCGCTGGTTCGACCACCTGTAGGACGGGTTGCTCTGGGTGTACAAGGGGGTCCGGGG
KillerRed > T V N C D G F Q P D G P I M R D Q L V D I L P N E T H M F P H G P

Pvu2
|
SpDon
|
AACGCCGTGCGCCAGCTGGCCTTCATCGGCTTCACCACCGCCGACGGCGGCCTGATGATGGGCCACTTCGACAGCAAGATGACCTTCAACGGCAGCCGCG
1201 |||||*|||||*|||||*|||||*|||||*|||||*|||||*|||||*|||||*|||||*|||||*|||||*|||||* 1300
TTGCGGCACGCGGTTCGACCGGAAGTAGCCGAAGTGGTGGCGGCTGCCGCCGGACTACTACCCGGTGAAGCTGTGCTTCTACTGGAAGTTGCCGTTCGGCGC
KillerRed > N A V R Q L A F I G F T T A D G G L M M G H F D S K M T F N G S R A

Dra3
|
Pml1
|
CCATCGAGATCCCCGGCCACACTTCGTGACCATCATCACCAAGCAGATGAGGGACACCAGCGACAAGCGCGACCACGTGTGCCAGCGCGAGGTGGCCTA
1301 |||||*|||||*|||||*|||||*|||||*|||||*|||||*|||||*|||||*|||||*|||||*|||||*|||||* 1400
GGTAGTCTAGGGGCCGGGTGTGAAGCACTGGTAGTAGTGGTTCGTCTACTCCCTGTGGTTCGCTGTTTCGCGCTGGTGCACACGGTTCGCGCTCCACCGGAT
KillerRed > I E I P G P H F V T I I T K Q M R D T S D K R D H V C Q R E V A Y

```

```

                                Not1
                                Eag1      Xba1      BsaB1
                                |          |          |
                                |          |          |
Dra3
|
CGCCACAGCGTGCCTCCGCATCACCAGCGCCATCGGTAGCGACGAGGATTAAGCGGCCGCGACTCTAGATCATAATCAGCCATAACCACATTTGTAGAGG
1401 |||||*|||||*|||||*|||||*|||||*|||||*|||||*|||||*|||||*|||||*|||||*|||||*|||||* 1500
GCGGGTGTTCGCACGGGGCGTAGTGGTTCGCGGTAGCCATCGCTGCTCCTAATTTTCGCCGGCGCTGAGATCTAGTATTAGTCGGTATGGTGTAAACATCTCC
KillerRed > A H S V P R I T S A I G S D E D *

                                Bsm1
                                Mfe1      Hpa1      polyA      Psi1
                                ||          |          |          |
                                ||          |          |          |
SpDon  Dra1
|      |
TTTTACTTGCTTTAAAAAACCTCCACACCTCCCCCTGAACCTGAAACATAAAATGAATGCAATTGTTGTTGTTAACTTGTTTATTGCAGCTTATAATGG
1501 |||||*|||||*|||||*|||||*|||||*|||||*|||||*|||||*|||||*|||||*|||||*|||||*|||||* 1600
AAAAATGAACGAAATTTTTTGGAGGGTGTGGAGGGGACTTGGACTTTGTATTTTACTTACGTTAACAACAACAATTGAACAAATAACGTCGAATATTACC

polyA                                polyA      Bts1 Bsm1                                Afl2
|                                |          |          |          |
|                                |          |          |          |
TTACAAATAAAGCAATAGCATCACAAATTTACAAATAAAGCATTTTTTTCACTGCATTCTAGTTGTGGTTTGTCCAAACTCATCAATGTATCTTAAGGC
1601 |||||*|||||*|||||*|||||*|||||*|||||*|||||*|||||*|||||*|||||*|||||*|||||*|||||* 1700
AATGTTTATTTTCGTTATCGTAGTGTAAAGTGTATTTTCGTAAAAAAGTGACGTAAGATCAACACCAACAGGTTTGAGTAGTTACATAGAATTCCG

SpDon      Ssp1                                Psi1
|          |                                |
|          |                                |
GTAAATTGTAAGCGTTAATATTTTGTAAAAATTCGCGTTAAATTTTTGTAAATCAGCTCATTTTTTAACCAATAGGCCGAAATCGGCAAAATCCCTTAT
1701 |||||*|||||*|||||*|||||*|||||*|||||*|||||*|||||*|||||*|||||*|||||*|||||*|||||* 1800
CATTTAACATTCGCAATTATAAAACAATTTTAAGCGCAATTTAAAAACAATTTAGTCGAGTAAAAAATTGGTTATCCGGCTTTAGCCGTTTTAGGGAATA

                                BsaXb                                Drd1      BsaXa
                                |                                |          |
                                |                                |          |
AAATCAAAAGAATAGACCGAGATAGGGTTGAGTGTGTTCCAGTTTGAACAAGAGTCCACTATTAAAGAACGTGGACTCCAACGTCAAAGGGCGAAAAA
1801 |||||*|||||*|||||*|||||*|||||*|||||*|||||*|||||*|||||*|||||*|||||*|||||*|||||* 1900
TTTAGTTTTCTTATCTGGCTCTATCCCAACTCACAAACAAGGTCAAACCTTGTCTCAGGTGATAATTTCTTGCACCTGAGGTTGCAGTTTCCCGCTTTTT

                                BtgZ1
                                Dra3
                                |
                                |
CCGTCTATCAGGGCGATGGCCCACTACGTGAACCATCACCTAATCAAGTTTTTTGGGGTTCGAGGTGCCGTAAAGCACTAAATCGGAACCTTAAAGGGAG
1901 |||||*|||||*|||||*|||||*|||||*|||||*|||||*|||||*|||||*|||||*|||||*|||||*|||||* 2000
GGCAGATAGTCCCGCTACCGGTGATGCACTTGGTAGTGGGATTAGTTCAAAAAACCCAGCTCCACGGCATTTCGTGATTTAGCCTTGGGATTTCCCTC
```

```

                                NaeI
                                NgoM4 |
                                BsrB1 |
2001 CCCCCGATTTAGAGCTTGACGGGGAAAGCCGGCGAACGTGGCGAGAAAGGAAGGGAAAGAAAGCGAAAGGAGCGGGCGCTAGGGCGCTGGCAAGTGTAGCG
    |||||*|||||*|||||*|||||*|||||*|||||*|||||*|||||*|||||*|||||*|||||*|||||*|||||*|||||*|||||* 2100
    GGGGGCTAAATCTCGAACTGCCCTTTCGGCCGCTTGCACCGCTCTTTCCTTCCCTTCTTTCGCTTTCCTCGCCCGGATCCCGCGACCGTTCACATCGC

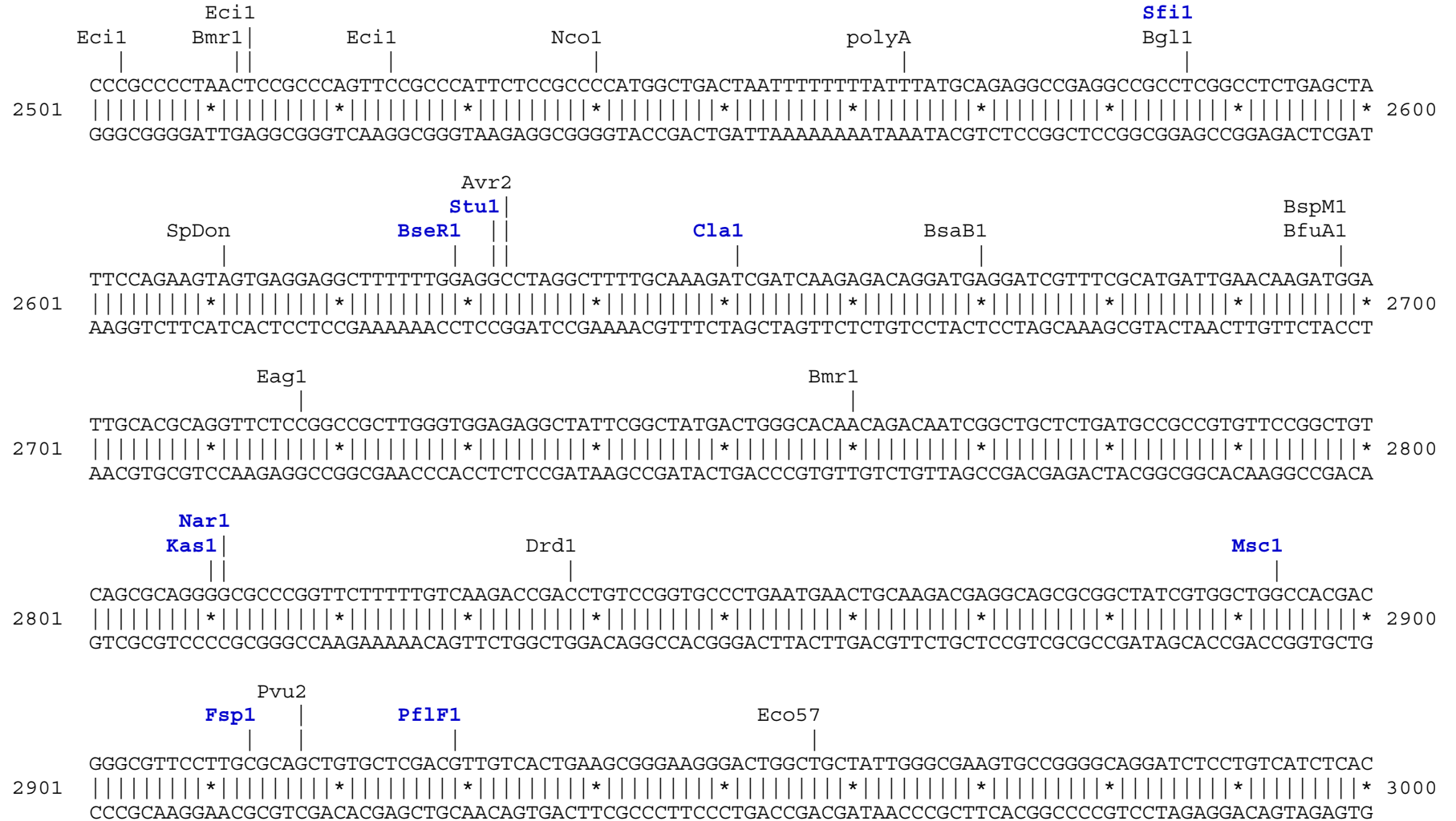
    GTCACGCTGCGCGTAACCACCACACCCGCCGCGCTTAATGCGCCGCTACAGGGCGCGTCAGGTGGCACTTTTCGGGGAAATGTGCGCGGAACCCCTATTT
2101 |||||*|||||*|||||*|||||*|||||*|||||*|||||*|||||*|||||*|||||*|||||*|||||*|||||*|||||*|||||* 2200
    CAGTGCACGCGCATTTGGTGGTGTGGGCGGCGGAATTACGCGGCGATGTCCCGCGCAGTCCACCGTGAAAAGCCCTTTACACGCGCCTTGGGGATAAAA

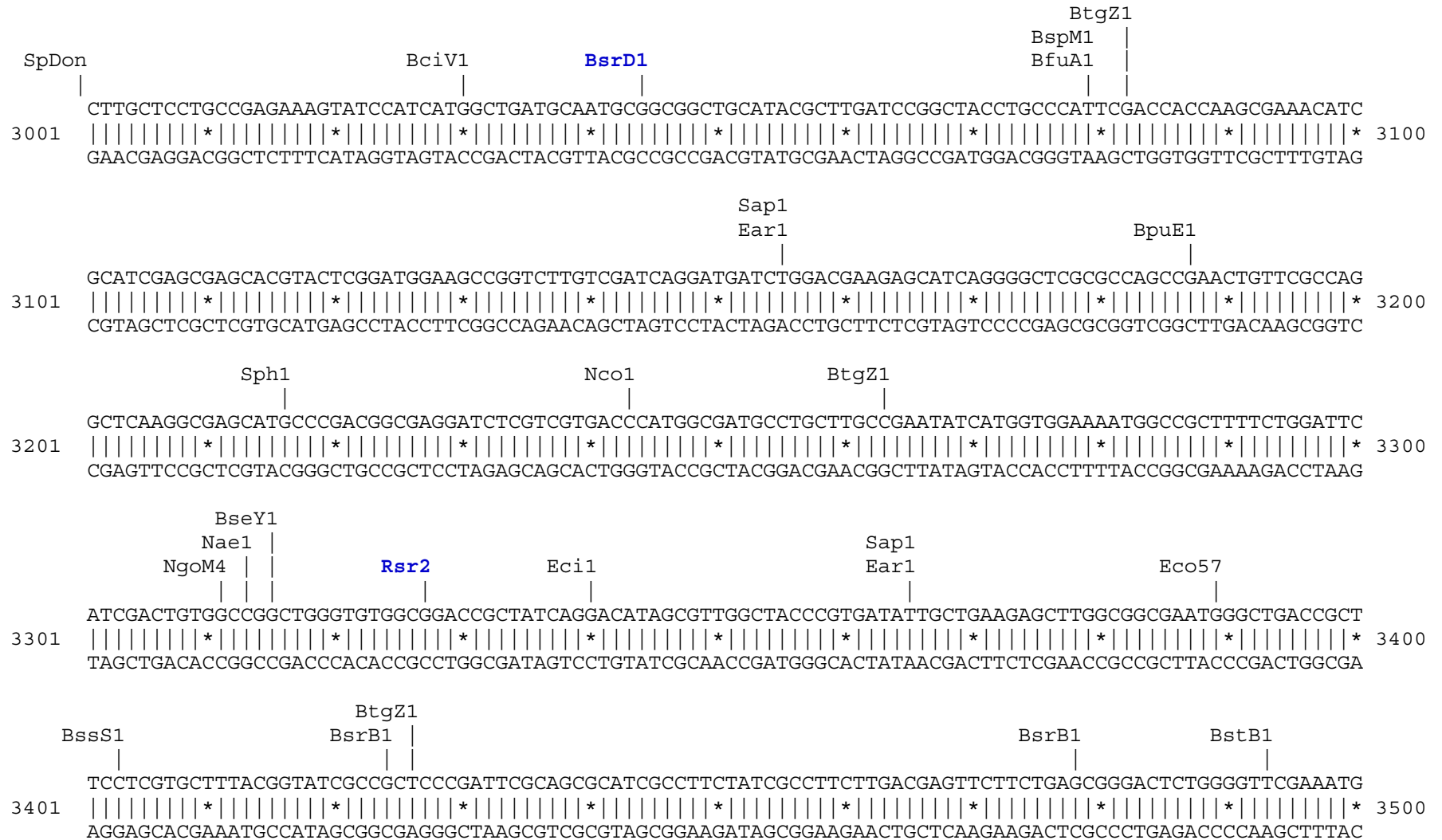
                                BciV1
                                BspH1 |
                                BsrB1 |
    polyA |
                                Ssp1 |
                                Ear1 |
                                Bsu36 |
2201 GTTTATTTTCTAAATACATTCAAATATGTATCCGCTCATGAGACAATAACCCCTGATAAATGCTTCAATAATATTGAAAAAGGAAGAGTCCTGAGGCGGA
    |||||*|||||*|||||*|||||*|||||*|||||*|||||*|||||*|||||*|||||*|||||*|||||*|||||*|||||*|||||* 2300
    CAAATAAAAAGATTTATGTAAGTTTATACATAGGCGAGTACTCTGTTATTGGGACTATTTACGAAGTTATTATAACTTTTTCTTCTCAGGACTCCGCCT

                                NsiI
                                Sph1 |
                                BfrB1 |
                                BstAP |
                                BseY1 |
                                Eci1 |
                                Pvu2 |
2301 AAGAACCAGCTGTGGAATGTGTGTCAGTTAGGGTGTGGAAAGTCCCAGGCTCCCAGCAGGCAGAAGTATGCAAAGCATGCATCTCAATTAGTCAGCAA
    |||||*|||||*|||||*|||||*|||||*|||||*|||||*|||||*|||||*|||||*|||||*|||||*|||||*|||||*|||||* 2400
    TTCTTGGTCGACACCTTACACACAGTCAATCCACACCTTTCAGGGGTCCGAGGGGTTCGTCCGTCTTCATACGTTTCGTACGTAGAGTTAATCAGTCGTT

                                NsiI
                                Sph1 |
                                BfrB1 |
                                BstAP |
                                Eci1 |
                                BseY1 |
SexA1 |
2401 CCAGGTGTGGAAAGTCCCAGGCTCCCAGCAGGCAGAAGTATGCAAAGCATGCATCTCAATTAGTCAGCAACCATAGTCCC GCCCCTAACTCCGCCAT
    |||||*|||||*|||||*|||||*|||||*|||||*|||||*|||||*|||||*|||||*|||||*|||||*|||||*|||||*|||||* 2500
    GGTCCACACCTTTCAGGGGTCCGAGGGGTTCGTCCGTCTTCATACGTTTCGTACGTAGAGTTAATCAGTCGTTGGTATCAGGGCGGGGATTGAGGCGGGTA

```





BssS1
BspM1
BfuA1
SpAcc
NaeI
NgoM4
Bpm1
3501
ACCGACCAAGCGACGCCAACCTGCCATCACGAGATTTTCGATTCCACCGCCGCCTTCTATGAAAGGTTGGGCTTCGGAATCGTTTTCCGGGACGCCGGCT 3600
|||||||*|||||||*|||||||*|||||||*|||||||*|||||||*|||||||*|||||||*|||||||*|||||||* 3600
TGGCTGGTTTCGCTGCGGGTTGGACGGTAGTGCTCTAAAGCTAAGGTGGCGGCCGAAGATACTTTCCAACCCGAAGCCTTAGCAAAAAGGCCCTGCGGCCGA

Bpm1
SpAcc
Avr2
3601
GGATGATCCTCCAGCGCGGGGATCTCATGCTGGAGTTCCTCGCCCACCCTAGGGGGAGGCTAACTGAAACACGGAAGGAGACAATACCGGAAGGAACCCG 3700
|||||||*|||||||*|||||||*|||||||*|||||||*|||||||*|||||||*|||||||*|||||||*|||||||* 3700
CCTACTAGGAGGTTCGCGCCCTAGAGTACGACCTCAAGAAGCGGGTGGGATCCCCCTCCGATTGACTTTGTGCCTTCTCTGTTATGGCCTTCCTTGGGC

polyA polyA
3701
CGCTATGACGGCAATAAAAAAGACAGAATAAAAAAGCACGGTGTTGGGTTCGTTTGTTCATAAACCGGGGGTTCGGTCCCAGGGCTGGCACTCTGTGCATACC 3800
|||||||*|||||||*|||||||*|||||||*|||||||*|||||||*|||||||*|||||||*|||||||*|||||||* 3800
GCGATACTGCCGTTATTTTTCTGTCTTATTTTTGCGTGCCACAACCCAGCAAACAAGTATTTGCGCCCCAAGCCAGGGTCCCAGCGTGAGACAGCTATGG

Bsa1
3801
CCACCGAGACCCCATTTGGGGCCAATACGCCCGGTTTTCTTCTTTTTCCCACCCACCCCCAAGTTTCGGGTGAAGGCCAGGGCTCGCAGCCAACGTTCG 3900
GGTGGCTCTGGGGTAACCCCGTTATGCGGGCGCAAAGAAGGAAAAGGGGTGGGGTGGGGGGTTCAGCCCACTTCCGGGTCCCAGCGTTCGGTTGCAGC

BstAP
AlwN1
Bsu36
Dra1
Dra1
3901
GGGCGGCAGGCCCTGCCATAGCCTCAGGTTACTCATATATACTTTAGATTGATTTAAACTTTCATTTTTAATTTAAAAGGATCTAGGTGAAGATCCTTTTT 4000
|||||||*|||||||*|||||||*|||||||*|||||||*|||||||*|||||||*|||||||*|||||||*|||||||* 4000
CCCGCGTCCGGGACGGTATCGGAGTCCAATGAGTATATATGAAATCTAACTAAATTTTGAAGTAAAATTAATTTTTCTAGATCCACTTCTAGGAAAA

BspH1
4001
TGATAATCTCATGACCAAAAATCCCTTAACGTGAGTTTTTCGTTCCACTGAGCGTCAGACCCCGTAGAAAAGATCAAAGGATCTTCTTGAGATCCTTTTTTTT 4100
|||||||*|||||||*|||||||*|||||||*|||||||*|||||||*|||||||*|||||||*|||||||*|||||||* 4100
ACTATTAGAGTACTGGTTTTAGGGAATTGCACTCAAAAAGCAAGGTGACTCGCAGTCTGGGGCATCTTTTCTAGTTTTCTAGAAGAACTCTAGGAAAAAAA

BpuE1 | Eco57 |
CTGCGCGTAATCTGCTGCTTGCAAACAAAAAACCACCGCTACCAGCGGTGGTTTTGTTTGCCGGATCAAGAGCTACCAACTCTTTTTCCGAAGGTAAGT
4101 |||||*|||||*|||||*|||||*|||||*|||||*|||||*|||||*|||||*|||||*|||||*|||||*|||||* 4200
GACGCGCATTAGACGACGAACGTTTGTTTTTTTGGTGGCGATGGTCGCCACCAAACAAACGGCCTAGTTCTCGATGGTTGAGAAAAAGGCTTCCATTGAC

SpAcc |
GCTTCAGCAGAGCGCAGATACCAAATACTGTCTTCTAGTGTAGCCGTAGTTAGGCCACCACTTCAAGAACTCTGTAGCACCGCCTACATACCTCGCTCT
4201 |||||*|||||*|||||*|||||*|||||*|||||*|||||*|||||*|||||*|||||*|||||*|||||*|||||* 4300
CGAAGTCGTCTCGCGTCTATGGTTTATGACAGGAAGATCACATCGGCATCAATCCGGTGGTGAAGTTCTTGAGACATCGTGGCGGATGTATGGAGCGAGA

AlwN1 | BpuE1 |
GCTAATCCTGTTACCAGTGGCTGCTGCCAGTGGCGATAAGTCGTGTCCTTACCGGGTTGGACTCAAGACGATAGTTACCGGATAAGGCGCAGCGGTCCGGC
4301 |||||*|||||*|||||*|||||*|||||*|||||*|||||*|||||*|||||*|||||*|||||*|||||*|||||* 4400
CGATTAGGACAATGGTCACCGACGACGGTCACCGCTATTGACACAGAATGGCCCAACCTGAGTTCTGCTATCAATGGCCTATTCCGCGTCGCCAGCCCG

ApaL1 | BseY1 | SpAcc |
TGAACGGGGGGTTCGTGCACACAGCCAGCTTGGAGCGAACGACCTACACCGAACTGAGATACCTACAGCGTGAGCTATGAGAAAGCGCCACGCTTCCCG
4401 |||||*|||||*|||||*|||||*|||||*|||||*|||||*|||||*|||||*|||||*|||||*|||||*|||||* 4500
ACTTGCCCCCAAGCACGTGTGTCGGGTCGAACCTCGCTTGTGCTGGATGTGGCTTGACTCTATGGATGTCGCACTCGATACTCTTTTCGCGGTGCGAAGGGC

BciV1 | Eci1 | BssS1 | SpAcc |
AAGGGAGAAAGGCGGACAGGTATCCGGTAAGCGGCAGGGTCGGAACAGGAGAGCGCACGAGGGAGCTTCCAGGGGAAACGCCTGGTATCTTTATAGTCC
4501 |||||*|||||*|||||*|||||*|||||*|||||*|||||*|||||*|||||*|||||*|||||*|||||*|||||* 4600
TTCCCTCTTTCCGCTGTCCATAGGCCATTGCGCGTCCCAGCCTTGTCTCTCGCGTGCTCCCTCGAAGGTCCCCCTTTGCGGACCATAGAAATATCAGG

Drd1 | BpuE1 | SpAcc | Eci1 |
TGTCGGGTTTTGCCACCTCTGACTTGAGCGTCGATTTTTGTGATGCTCGTCAGGGGGGCGGAGCCTATGGAAAAACGCCAGCAACCGGCCTTTTTTACGG
4601 |||||*|||||*|||||*|||||*|||||*|||||*|||||*|||||*|||||*|||||*|||||*|||||*|||||* 4700
ACAGCCCAAAGCGGTGGAGACTGAACTCGCAGCTAAAAACTACGAGCAGTCCCCCGCCTCGGATACCTTTTTGCGGTGCGCCGGAAAAATGCC

```

                SpDon
                BspLU|
                ||
TTCCTGGCCTTTTGGCTGGCCTTTTGGCTCACATGTTCTTTCTGCGTTATCCCCTGATTCTGTGGATAACCGTATTACCGCCATGCAT
4701  |||||*|||||*|||||*|||||*|||||*|||||*|||||*|||||*|||||*|||||*|||||*|||||*|||||*|||||*|||||* 4787
AAGGACCGGAAAACGACCGGAAAACGAGTGTACAAGAAAGGACGCAATAGGGGACTAAGACACCTATTGGCATAATGGCGGTACGTA

```

Found:

Aar1	Aat2	Acc65	Afe1	Afl2	Age1	Ale1	AlwN1	Apa1	ApaL1	Ase1	Avr2	BamH1	BciV1
BfrB1	BfuA1	Bgl1	Bgl2	Bmr1	Bpm1	Bpu10	BpuE1	Bsa1	BsaB1	BsaXa	BsaXb	BseR1	BseY1
Bsm1	BspH1	BspLU	BspM1	BsrB1	BsrD1	BssS1	BstAP	BstB1	Bsu36	BtgZ1	Bts1	_Chi	Clal
Dra1	Dra3	Drd1	Eag1	Ear1	Eci1	Eco57	EcoR1	Fsp1	Hind3	Hpa1	Kas1	Kpn1	Mfe1
Msc1	Nae1	Nar1	Nco1	Nde1	NgoM4	Nhe1	Not1	Nsi1	PflF1	PflM1	Pml1	polyA	Psi1
PspOM	Pst1	Pvu2	Rsr2	Sac1	Sac2	Sall	Sap1	SexA1	Sfi1	Sma1	SnaB1	SpAcc	SpDon
Sph1	Ssp1	Stu1	Xba1	Xho1									

Unique:

Aar1	Acc65	Afe1	Afl2	Age1	Apa1	Ase1	BamH1	Bpu10	BsaXa	BsaXb	BseR1	BsrD1	Bts1
_Chi	Clal	EcoR1	Fsp1	Hind3	Hpa1	Kas1	Kpn1	Mfe1	Msc1	Nar1	Nde1	Nhe1	Not1
PflF1	Pml1	PspOM	Pst1	Rsr2	Sac1	Sac2	Sall	SexA1	Sfi1	Sma1	SnaB1	Stu1	Xba1
Xho1													

Not found:

Acc1	Ahd1	Asc1	AsiS1	Bae1a	Bae1b	Bbs1	BbvC1	Bcg1a	Bcg1b	Bcl1	Blp1	BmgB1	Bsg1
BsiW1	BsmB1	BspE1	BsrG1	BssH2	BstE2	BstX1	BstZ1	EcoK	EcoN1	EcoRV	ScFRT	Fse1	FspA1
I_Ceu	loxP	Mlu1	Nru1	Pac1	Pme1	PshA1	Pvu1	SanD1	Sbf1	Sca1	Sgf1	SgrA1	Spe1
Srf1	Swa1	T3RNA	T7RNA	T7Ter	PISce	Xcm1	Xmn1						

Excluded by site complexity:

Acc1	Aci1	Afl3	Alu1	Alw1	Apo1	Ava1	Ava2	Ban1	Ban2	Bbv1	BceA1	Bfa1	Bme15
BsaA1	BsaH1	BsaJ1	BsaW1	BseM2	BsiE1	BsiH1	Bsl1	BsmA1	BsmF1	Bsp12	BspCa	BspCb	Bsr1
BsrF1	BssK1	BstF5	BstN1	BstU1	BstY1	Btg1	Cac8	CviJ1	Dde1	Eae1	EcoO1	Fau1	Fnu4H
Fok1	Hae2	Hae3	Hga1	Hha1	Hinc2	Hinf1	HinP1	Hpa2	Hph1	Hpy99	Hpy1	Hpy3	HpyC3
HpyC4	HpyC5	Mae3	Mbo2	Mnl1	Mse1	Msl1	MspA1	Mwo1	Nci1	Nla3	Nla4	Nsp1	Ple1
PpuM1	Rsa1	Sau3A	Sau96	SfaN1	Sfc1	Sml1	Sty1	Taq1	Tat1	Tfi1	Tse1	Tsp45	Tsp50
TspR1													